

Installation Manual



CAT 67913 AUTO FAUCET MIXER



Revision 6



PAGE 1

Product Description

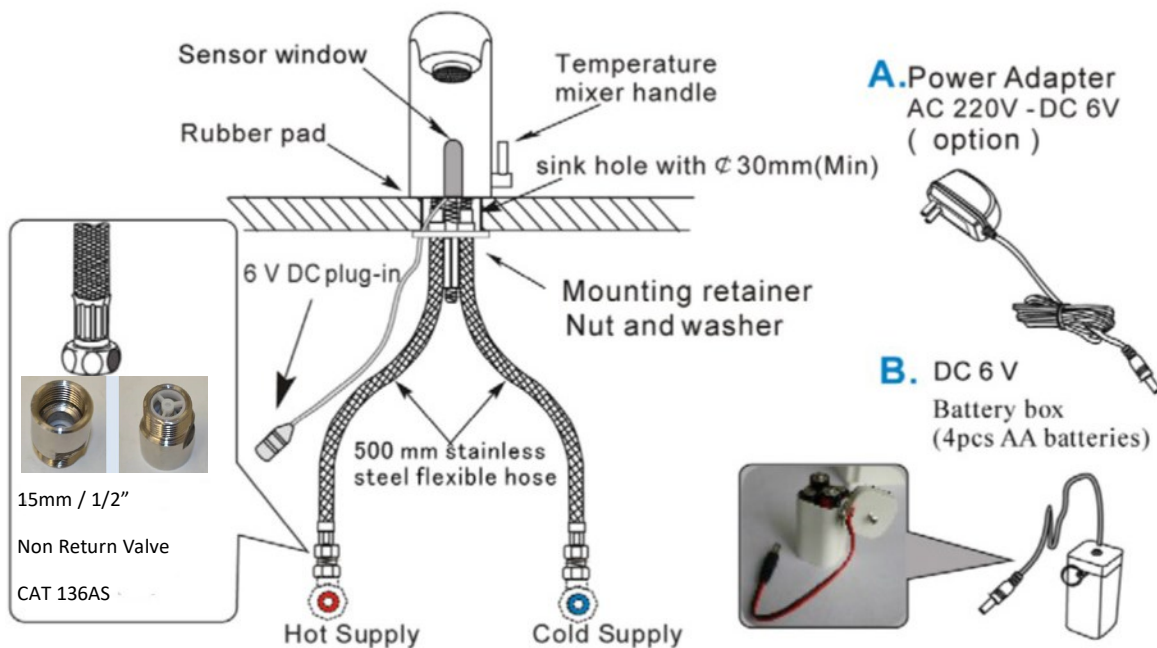
- With Micro- computer sensor control module, Low-consumption Micro-processor chip, stable features and strong Anti-interference function.
- Memorises adjusted sensor distance and stores into the electronic chip
- Option to use either 6 V battery pack and 240V Transformer (supplied)
- Sensor distance can be self- adjusted according to the environment.
- PCB electronic control module is double sealed and coated by high performance water proof membrane, then sealed with epoxy resin
- Faucet body is made from #59 solid brass with a superior electroplating to prevent corrosion and give a nice shiny finish
- Water saving aerator used in faucet, to prevent water splash and allow for a soft flow
- The faucet has been precisely manufactured and tested, to ensure the quality of the product reaches international standards

Technical Data

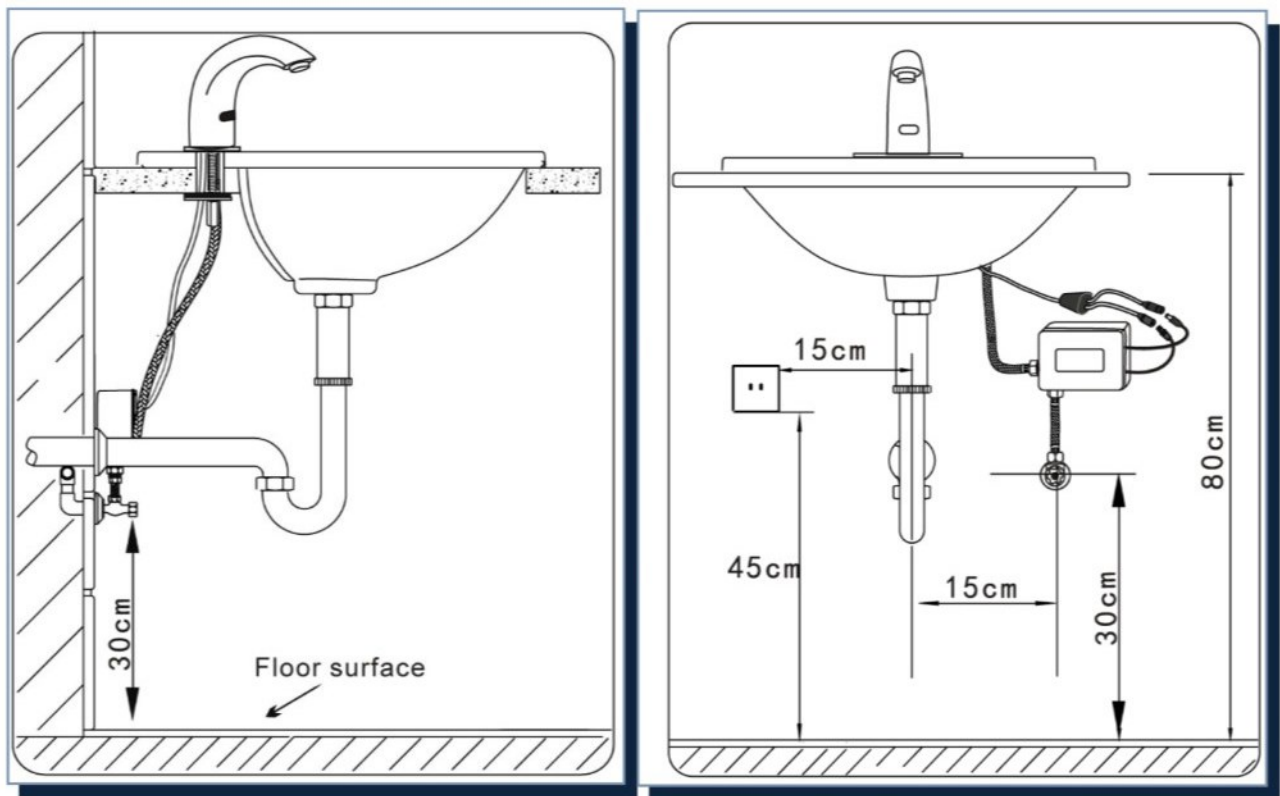
- Faucet spout material: solid brass with chrome finished
- Power supply: AC 240V or DC 6V (4pcs AA alkaline batteries)
- Battery life: 150,000 cycles
- Sensing range: 5cm to 22cm (automatic adjustable)
- Maximum Holding Temperature 40°C
- Water pressure: Minimum necessary water pressure 0.07Mpa - 0.7Mpa
- Supply inlet size: BSP 1/2 (DN15), male thread
- Installation diameter: single hole (32mm)
- Response time: less than 0.7 second
- Water stop protection time: 60 second
- Water flow rate: When water pressure under 0.3 Mpa less than 3 L/S



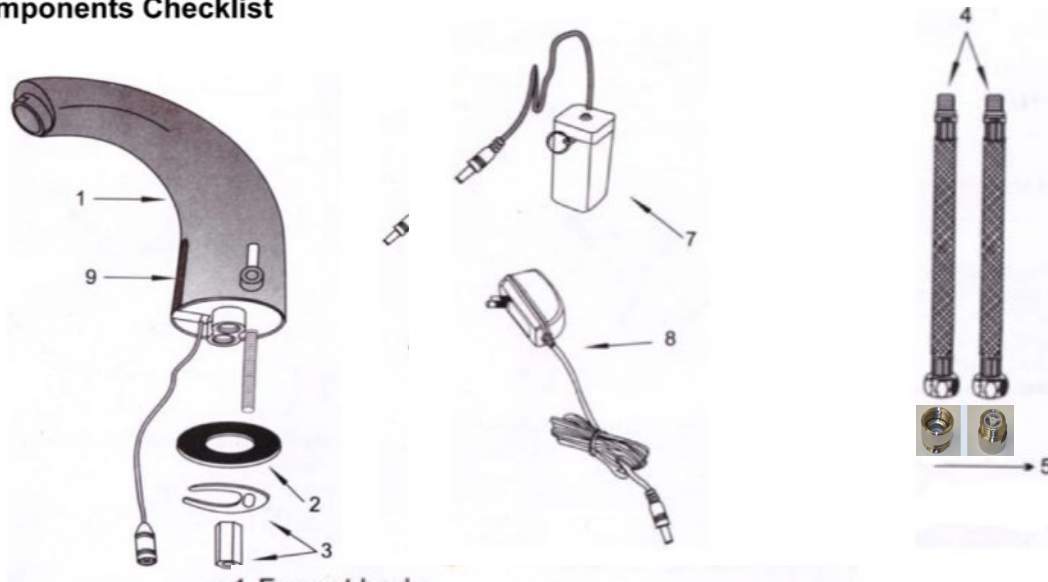
Components Diagram



Installation Dimensions



Components Checklist

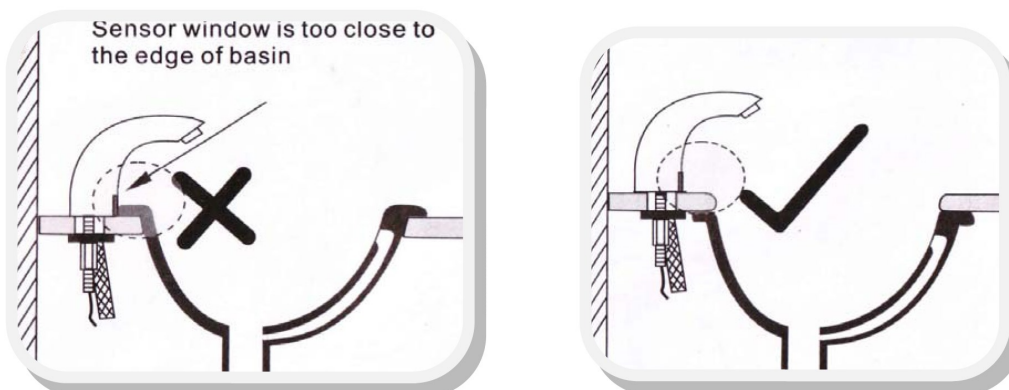


1. Faucet body
2. Diameter 58 mm retainer
3. Retainer+nut
4. 2 pcs flexile hose with BSP 1/2 (DN15)
5. -stop valve
- 679-136AS
7. Battery box(4pcs AA batteries)
8. DC 6V power transformer
9. Sensor window and Sensor

Prior to Installation

Please choose the right basin prior to installation

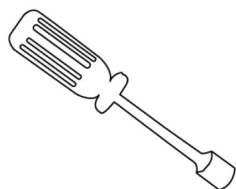
Warning: Sensor of the faucet must be higher than the basin or lavatory. Minimum of 15mm.



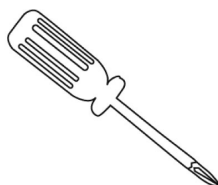
Prior to installing faucet, prepare the items listed below.

- Please choose the right basin before installation.
- Water supply pipe and water-proof socket (for electricity type).
- Hot/Cold water inlet flexible hose with 1/2 inch BSP nut on both ends.
- Ensure all pipes are cleared of any dirt before installation.
- Installation shall be in accordance with AS/NZS3500 series of Standards.

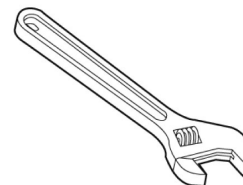
Tools Required



a. 12 mm socket screw driver.

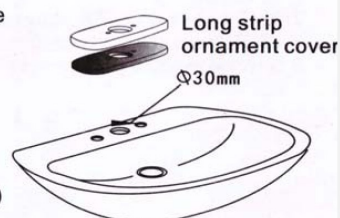


b. Philips head screw driver.



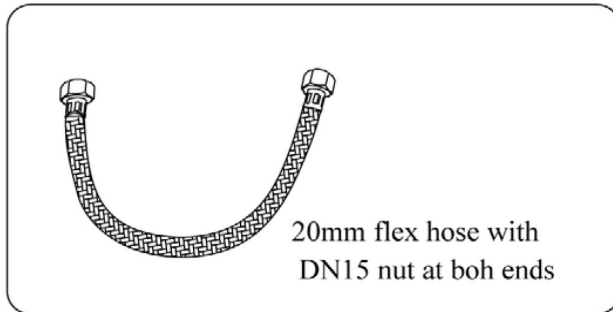
c. Shifter Spanner.

If install the faucet on the sink with three (3) connection holes, make sure the middle diameter is bigger than 30 mm. The two (2) holes besides can be covered with long trim plate to keep it nice appearance and waterproof. Long strip ornament cover should be solely Optional Accessory.



Hand basin with three(3) connection holes

- Supply stops and 20mm flex hose with DN 15 nut at both ends
- Water pipes and waterproof electricity mains (for AC type)
- If you need to adjust water temperature, please purchase cold and hot supply mixer and 2 extra 20mm flex hose with DN15 nut at both ends.
- Flush all pipe lines until water is clear before connecting.

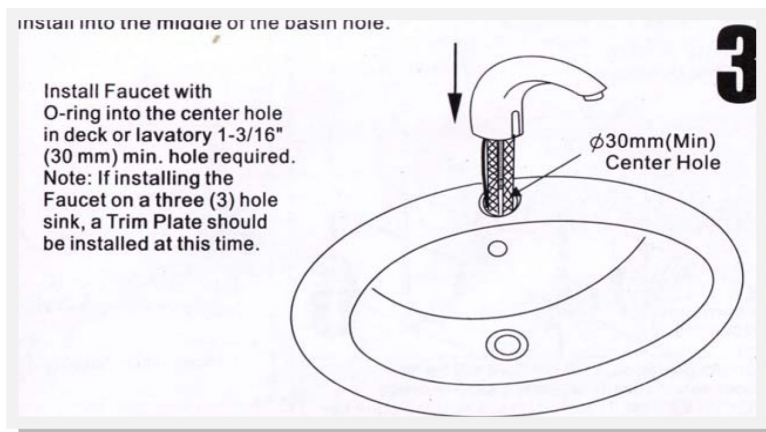
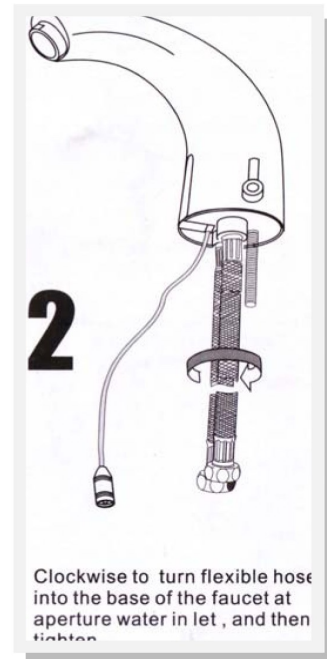
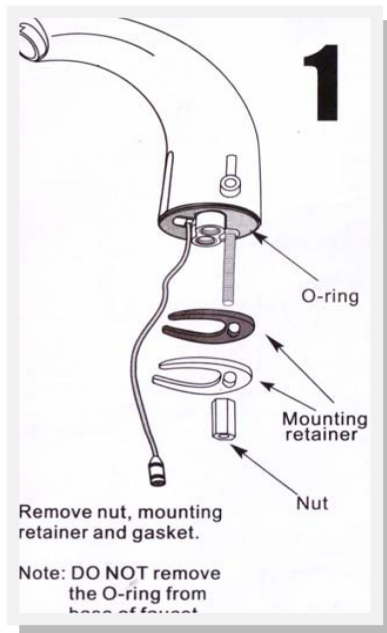


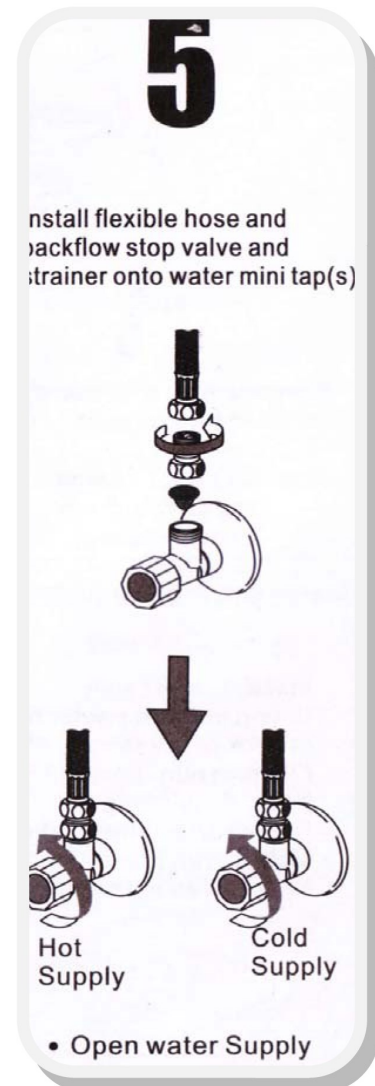
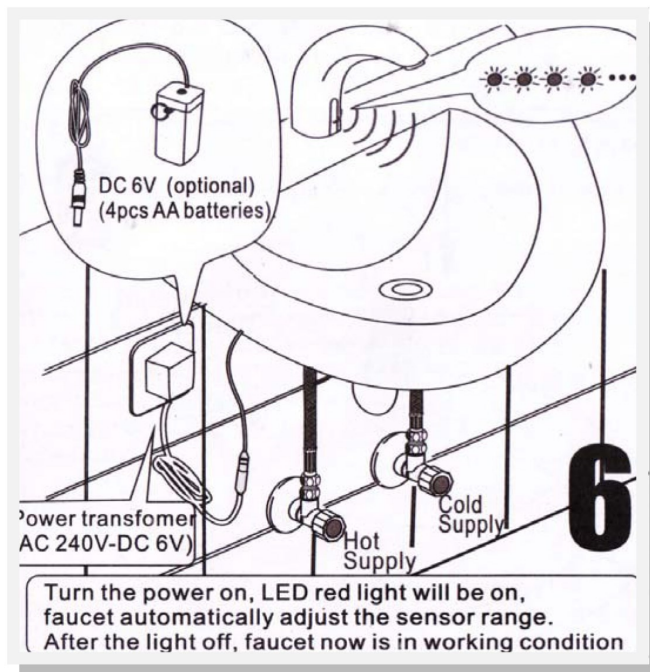
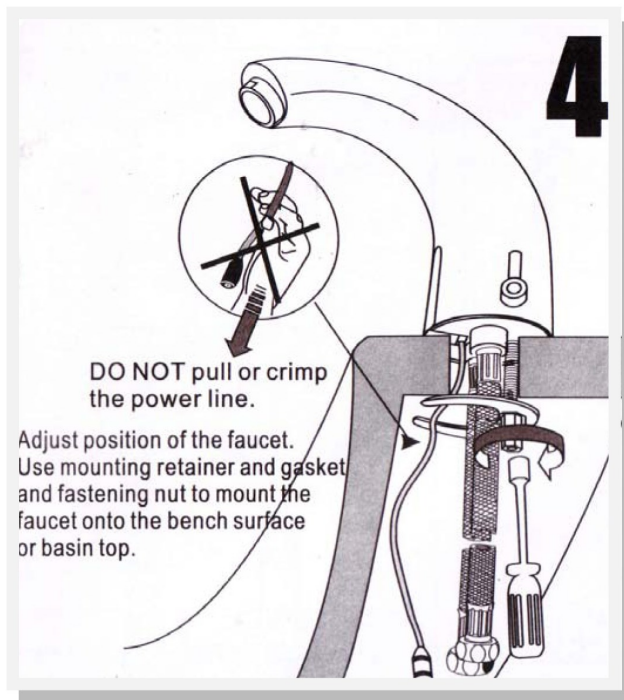
CAT 67M

Mixer T-Piece

***Not Supplied with tap ware, to
be purchased separately.***

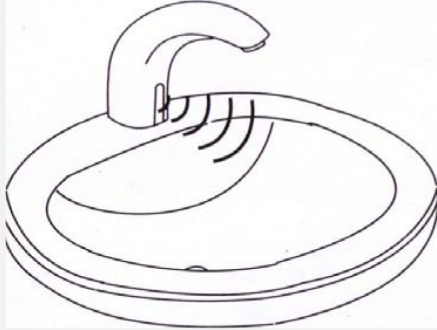
Installation Steps



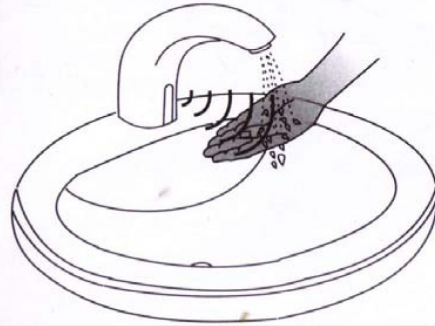


Operation

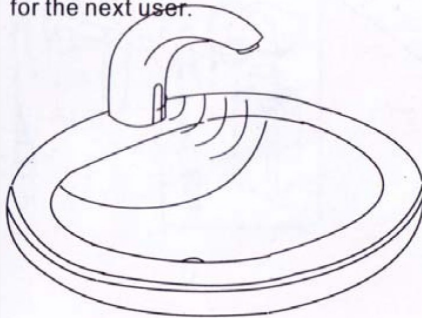
1. Invisible infrared rays are continuously emitted from the sensor faucet.



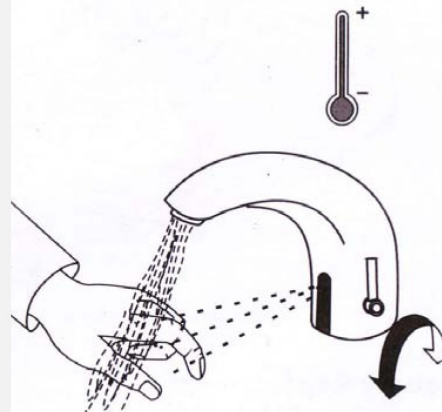
2. When user's hands move into the sensor detection zone, the solenoid valve is active, and water comes out



3. When user's hands move away from the sensor detection zone, or faucet reaches its time limit setting, the solenoid valve is auto inactive, stop water at once. The infrared sensor automatically resets for the next user.



Set And Fix Temperature

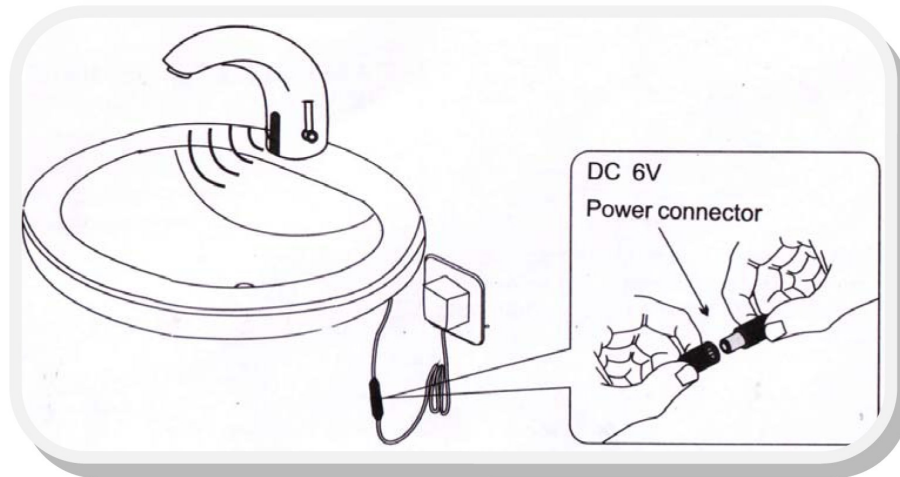


To adjust temperature mixer-handle to get comfortable temperature hot Water.

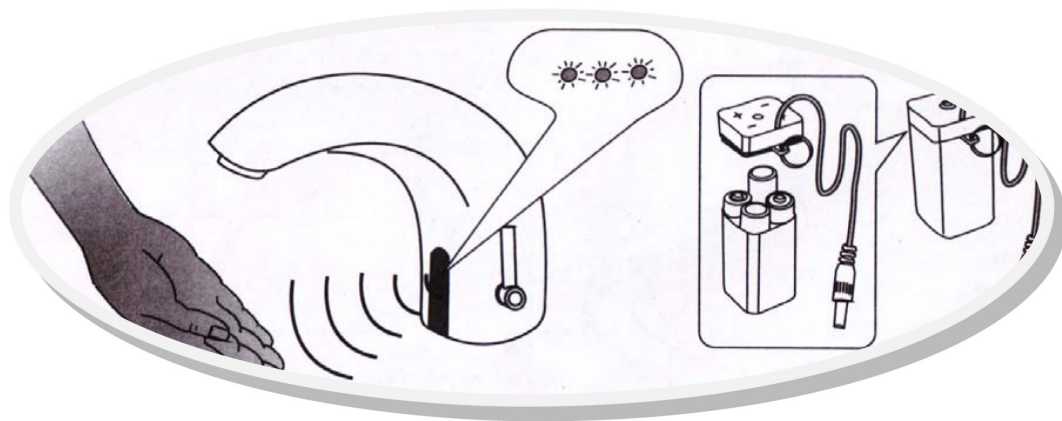
Caution: The temperature of the hot water supply has to be less than 50°C in order to avoid burning someone's hand.

Reset Faucet Sensor Range Auto Adjustment

Disconnect the power first, and reconnect the power, LED light will flash continuously. Sensor control module automatically sets the sensor range as per the surrounding of the basin. (Max long: 20cm. Min short 5cm)



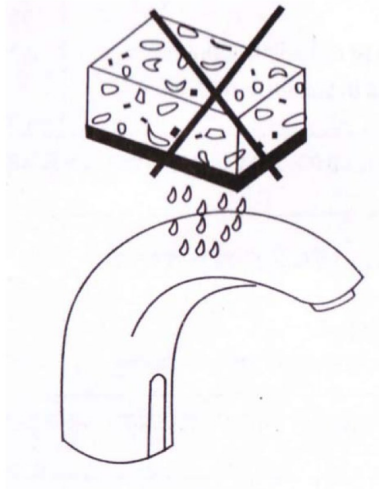
Battery Replacement



When your hand moves into the sensor range, the LED light will continually flash but no water flow.

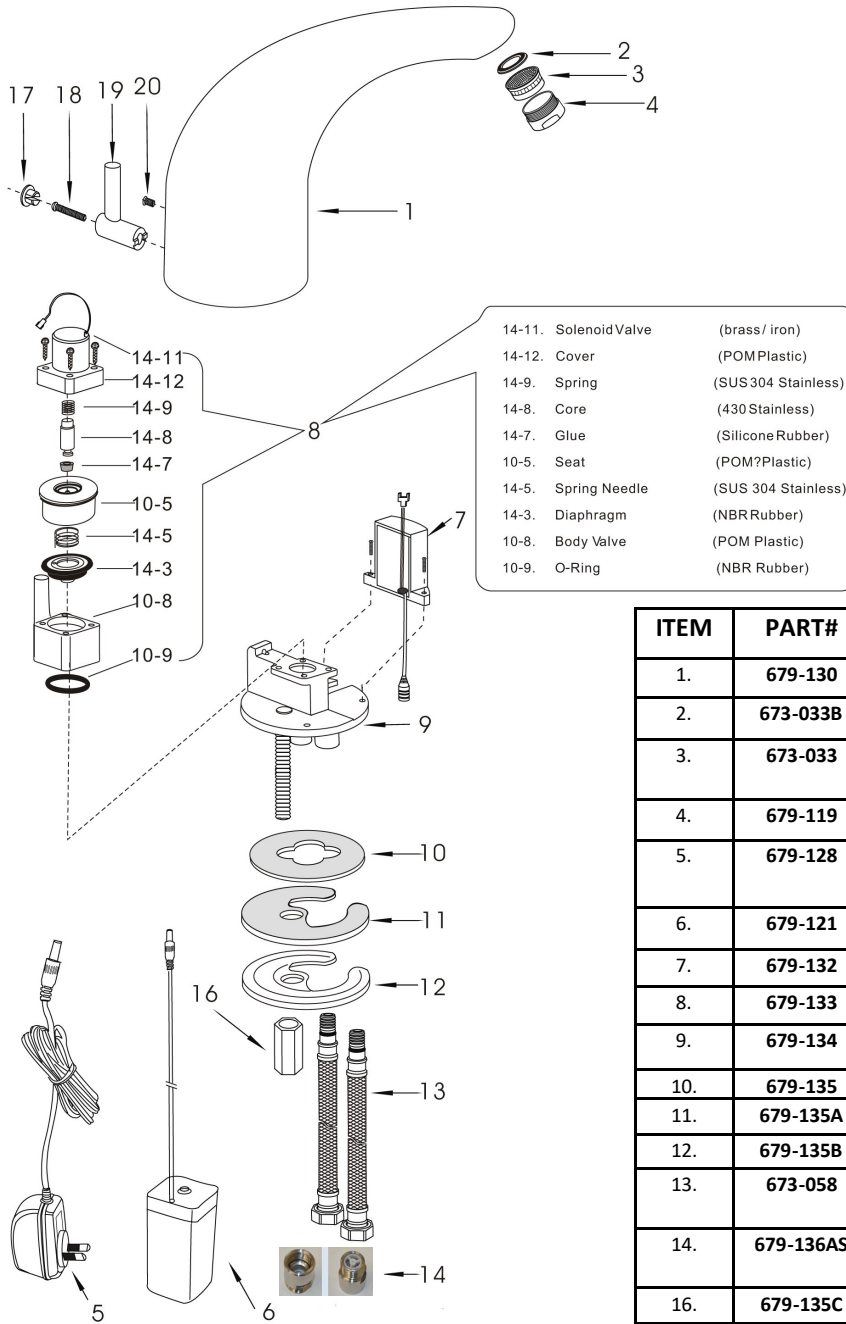
Batteries need to be replaced.

Cleaning / Maintenance



1. To keep it with a nice appearance, regular cleaning is essential.
2. Do not use abrasive or chemical cleaners (including chlorine bleach) to clean the faucet, that may dull the luster and attack the chrome or special decorative finishes.
3. Wash ONLY in soapy water, dry with clean soft cloth or towel.
4. When cleaning the bathroom tiles, should protect the faucet from any splashes of cleaner acids and/ cleaning fluids. It will discolour or remove chrome plating, losing shining appearance.

Cat 67913 Automatic Faucets Exploded View



ITEM	PART#	DESCRIPTION	MATERIAL
1.	679-130	Faucet Body	Brass CW602N
2.	673-033B	Rubber Mat	NBR Rubber
3.	673-033	Aerator	POM Plastic WMKA21177
4.	679-119	Spout Shell	Brass CW602N
5.	679-128	Power Transformer	Electronic Hardware
6.	679-121	Battery Holder	ABS Plastic
7.	679-132	Sensor	Electronic Hardware
8.	679-133	Solenoid Valve	POM Plastic + Rubber
9.	679-134	Temperature Regulation	Brass CW602N
10.	679-135	Rubber Mat	NBR Rubber
11.	679-135A	Rubber Mat	NBR Rubber
12.	679-135B	Stainless Steel Mat	SUS 304 S/Steel
13.	673-058	Braided Hose	SUS 304 S/Steel WMKA21505
14.	679-136AS	1/2" Stop Valve	SUS 304 S/STEEL + POM Plastic
16.	679-135C	Copper Nut	Brass
17.	679-137A	Cover	ABS Plastic
18.	679-137B	Screw	SUS 304 S/Steel
19.	679-137	Knob	Brass
20.	679-137C	Screw	SUS 304 S/Steel