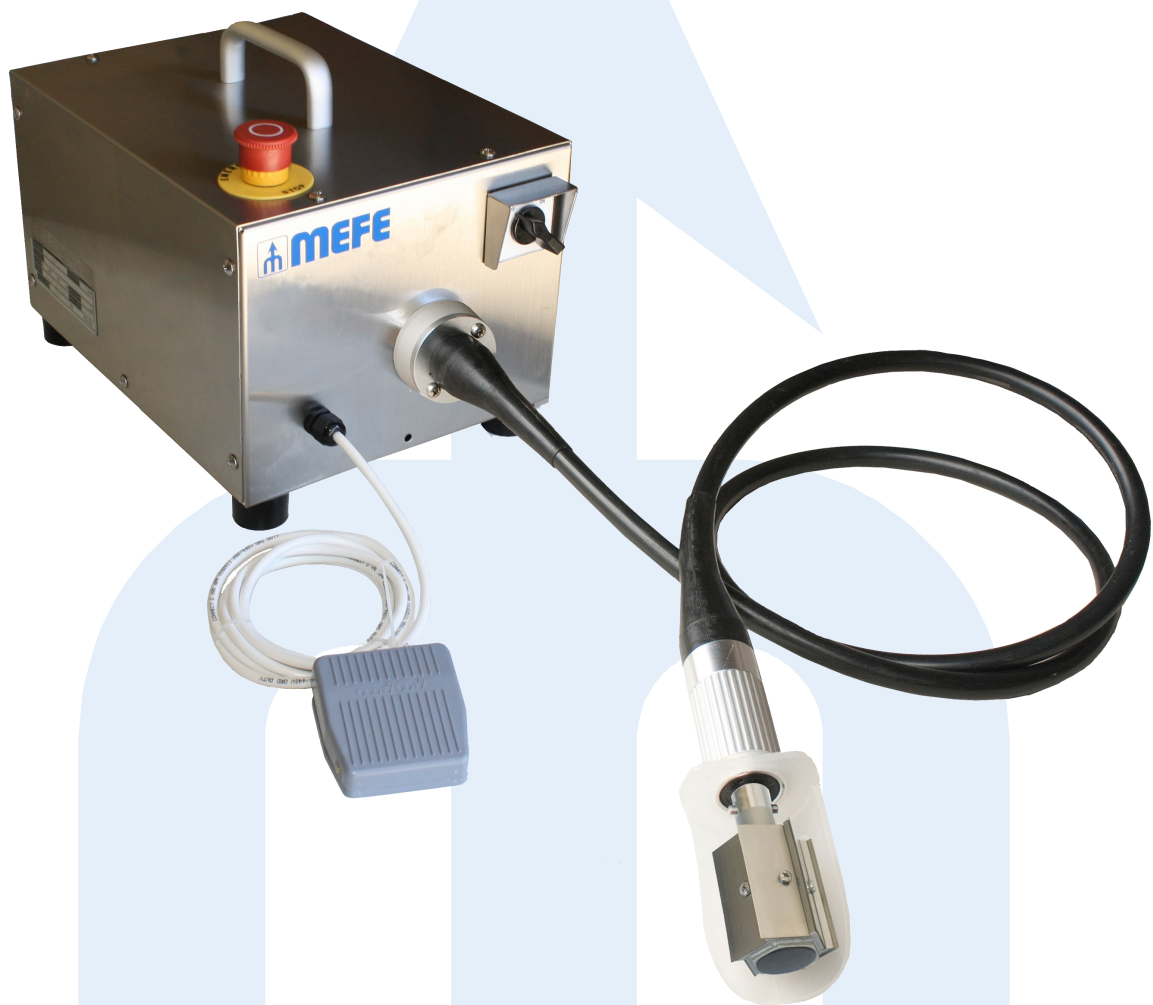


MANUAL

Electric Shaver



CAT 157ES

1800 669 006

www.mefe.com.au

Unauthorized reproduction or use of information herein is strictly forbidden



MANUAL

CONTENTS

1. Introduction	3-5
1.1 Instructions for use	3
1.2 Technical Specifications	3
1.3 Machine Noise	4
1.4 Machine Dimensions	4
1.5 Machine Dimensions Diagram	5
1.6 Labeled Diagram of parts	5
2. Installation	6 & 7
2.1 Direction of Rotation	6
2.2 Choosing the appropriate location	6
2.3 Power supply requirement	7
2.4 Connecting power source wires	7
2.5 Checking power wire connection	7
3. Operation	8-10
3.1 Safety measures	8
3.2 Warning plate	8
3.3 Warning plate diagram	8
3.4 Before use	9
3.5 During use	9
3.6 After use	9
3.7 Emergency stop	9
3.8 Starting and Stopping	9
3.9 Scaling	10
4. Cleaning and washing	11
5. Maintenance	11
6. Fault finding	12
7. Electrical components	12
8. Spare parts	13
9. Exploded drawing model	13 & 14

MANUAL

1. INTRODUCTION

1.1 INSTRUCTIONS FOR USE

WARNING



The Electric Shaver is designed specifically for the efficient cleaning and removal of hair from scalded pigs, goats and sheep. Please ensure that the ANIMAL is pre scalded before using this machine, scalding softens the hair and allows for easy dehairing. It is vital to practice the right safety precautions when using the machine as it is capable of inflicting damage to the user. Please ensure that you follow the according safety precautions closely as it is very important that the utmost care is taken when using this machine.

PLEASE COMPLY WITH

- DO NOT use the machine unless you have read and completely understood this manual.
- DO NOT use the machine unless all the guards and safety devices are fixed firmly into place.
- DO NOT OPERATE THIS MACHINE WITHOUT FULL AND COMPLETE PROTECTIVE WEAR. CHAIN MESH GLOVES, ARMGUARDS AND APRONS ARE A MINIMUM.
- It is also recommended to install a foot control pressure switch .
- Disconnect the power source before maintenance, cleaning or adjusting of the machine and once you are finished with the machine.
- Report all faults immediately.

1.2 TECHNICAL SPECIFICATIONS

MODEL	CAT 157EPC
Horse Power	0.37kW
Dimension (mm)	425 x 240 x 275
Rubber Tube (mm)	2000
Weight (kg)	16

1800 669 006

www.mefe.com.au

Unauthorized reproduction or use of information herein is strictly forbidden



MANUAL

1.3 MACHINE NOISE

DECLAIED NOISE EMISSION VALUES in accordance with ISO 7960.

	Idling	Operating
Declared A-weighted Sound Power Level, L_{ward}, in dB re 1 pW	60	70
Declared A-weighted Emission Sound Pressure Level, l_{pAd}, in dB re 20 μPa, at the operators position	50	60

Values determined according to specific test code ISO 3746.

The emission levels quoted above are not necessarily safe work levels. While there is a relation between emission levels and exposure levels, this cannot be used reliably to determine whether or not further precautions are required. Also, the permissible exposure levels can vary from country to country. This information, however will enable the machine user to make a better evaluation of hazard and risk .

1.4 MACHINE DIMENSIONS

CAT 157EPC	
D1	425mm
D2	1715mm
D3	165mm
H1	275mm
W1	240mm

1800 669 006

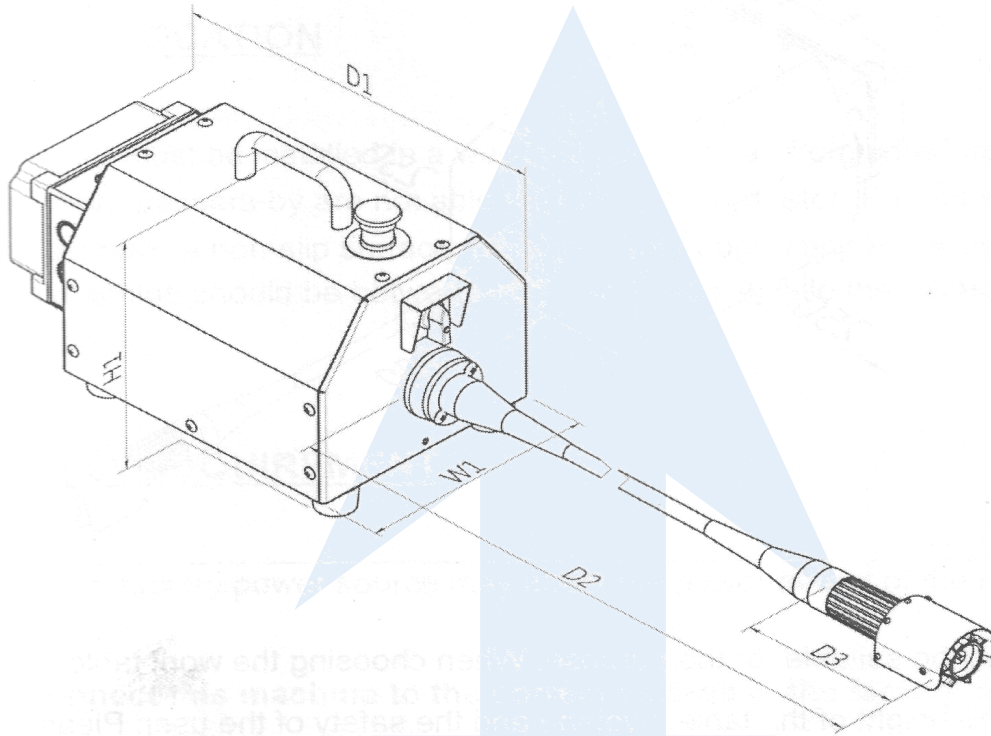
www.mefe.com.au

Unauthorized reproduction or use of information herein is strictly forbidden

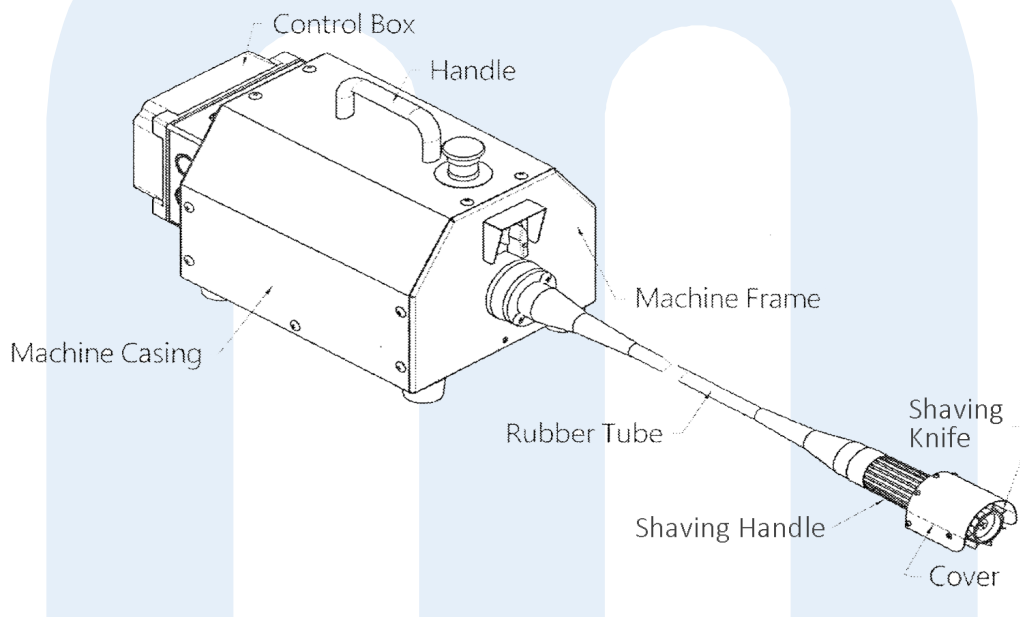


MANUAL

1.5 MACHINE DIMENSIONS DIAGRAM



1.6 LABELED DIAGRAM OF PARTS



1800 669 006

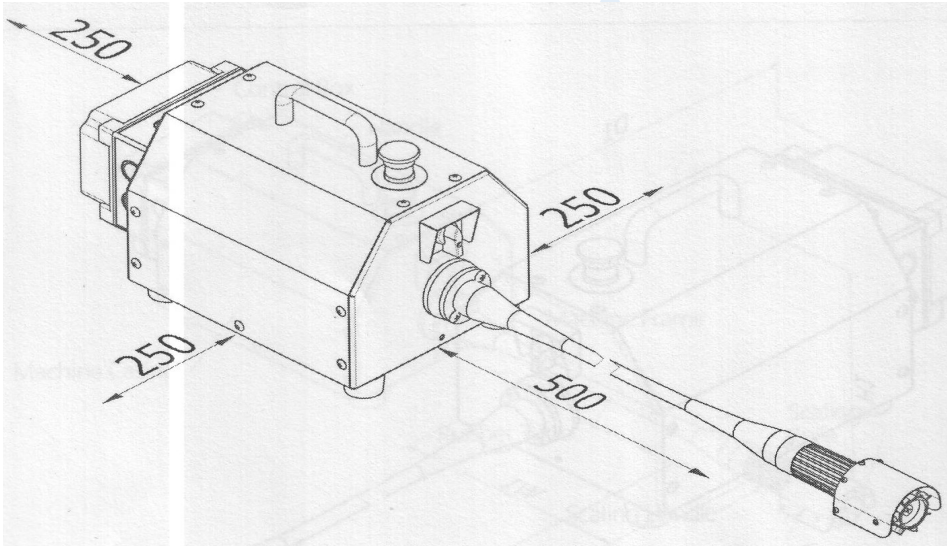
www.mefe.com.au

Unauthorized reproduction or use of information herein is strictly forbidden



MANUAL

2. INSTALLATION



Ensure that the work table is suitable for purpose; consider factors of height, hygiene and safety to the user.

NOTE: Please ensure that the supply voltage corresponds with the voltage marked on the rating label and that the electrical supply is disconnected before conducting any maintenance, adjustment or cleaning.

2.1 DIRECTION OF ROTATION

When viewed from the front, the SHAVING SPINDLE should rotate anti-clockwise

2.2 CHOOSING THE APPROPRIATE LOCATION

The Electric Shaver must be installed in a well lit place, away from corridors and doors and where passer-by's are not able to disturb the machine. For safety precautions please ensure that the floor is a non-slip surface also. The operating requirement temperatures are within +5-40°C, while the relative humidity should be between 30% and 95%.

MANUAL

2.3 POWER SUPPLY REQUIREMENT

Insufficient voltage from the factory power source may affect the power output of the motor and the function of the controller .

IT IS IMPORTANT TO CONNECT THIS MACHINE TO THE CORRECT VOLTAGE IN THE FACTORY POWER SOURCE. USE ONLY AN INDEPENDENT POWER SOURCE.

Model	kW	Voltage	Current	Breaker capacity	Wire size
CAT 157EPS	0.37	110V / 200V	5.7 / 2.9	5~8A / 2.5~4.1A	2.0mm ²

2.4 CONNECTING POWER SOURCE WIRES

1. Before connecting the power wires make sure the voltage between the machine and your factory power source is the same.
2. Connect the power wires to the L1, L2 and PE.
3. The machine must be properly grounded to prevent possible injury from electrical shock.
4. Connect the power wires from the machine bed to the electrical control box relative to connector type.
5. Qualified electrical personal should perform all electrical connections.



WARNING: Grounding should be based on the local regulations.

2.5 CHECKING POWER WIRE CONNECTION

After connecting the power wires it is necessary to check that they are connected to the correct connection points. After checking this turn on the switch, step on the foot switch and check to see if the scale knife is rotating.

MANUAL

3. OPERATION

3.1 SAFETY MEASURES

Following safety procedures in the operation of the machine is of the utmost importance to avoid bodily damage to the operator. Personal safety exceeds importance over the quick operation of the machine in all situations. It is recommended that only the people who have undergone the correct training in operating the machine, use the electrical SHAVER. Operators must be made aware of the dangerous factors and safety measures.

FULL AND COMPLETE CUT PROOF PROTECTION IS REQUIRED

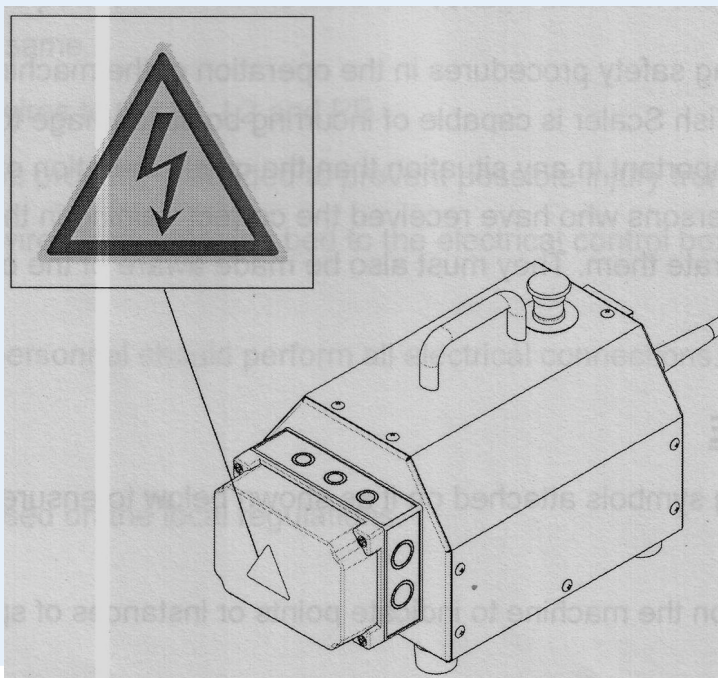
CHAINMAIL GLOVES , ARMGUARDS AND APRONS MUST BE WORN AT ALL TIMES

3.2 WARNING PLATE

The machine has warning symbols attached on it, as shown across, to ensure proper and safe operation. These symbols are used on the machine to indicate points or instances of specific danger to operating personnel.



3.3 WARNING PLATE DIAGRAM



1800 669 006

www.mefe.com.au

Unauthorized reproduction or use of information herein is strictly forbidden



MANUAL

3.4 BEFORE USE

- ENSURE OPERATOR IS PROPERLY PROTECTED WEARING GLOVES, ARMGUARDS AND APRONS THAT ARE CUT PROOF
- The electrical SHAVER is delivered with the shaving end removed.
- The machine must be installed at a height which is suitable for the operator. Ensure that the flexible casing is not kinked. For best results and longevity of the drive cable please ensure the drive motor is behind the operator at the same work height—avoid bending the drive cable

3.5 DURING USE

- Check that the rubber tube is not kinked.
- Do not touch the body of the machine during use.

3.6 AFTER USE

Turn the switch to stop the machine. In order to prevent accidental starting, also remove the plug from the wall socket. DO NOT touch the machine body right after operation whilst the machine is cooling down.

3.7 EMERGENCY STOP

During the operation of the machine, if any malfunctions occur, press this switch to stop all motion. When restarting the machine remember to turn this switch to the right to release it .

3.8 STARTING UP AND STOPPING

1. Take a firm hold of the shaving handle of the machine.
2. Turn on the switch.

MANUAL

3.9 Pig Scraping

1. Begin by scalding the pig / GOAT / SHEEP in hot water—62Degrees Celsius
2. WEARING CHAINMESH GLOVES
3. Using your left hand, take hold of the ANIMAL. Hold the handle in your right hand and move it gently along the body of the ANIMAL
4. **Make sure not to kink the rubber tube**
5. To clean the rotating shaving knife if it gets clogged with hair, rinse with clean, flowing water. ALWAYS stop the machine for cleaning. It is safe to run the shaving head under water.
6. Never put your fingers, or any other object which could cause an accident near the rotating shaving knife.
7. Recommendations: ALWAYS WEAR CHAIN MESH CUT PROOF GLOVES
 - Average use of 20-30 minutes before the machine needs to be stopped for a while.
 - Operating this machine with two people will ensure the most comfortable use.
 - After use, add grease to the flexible shaft to extend the life of the machine. Completely remove the inner cable and cover completely in food grade grease



WARNING

INSTRUCTION OF USE

Correct:



1800 669 006

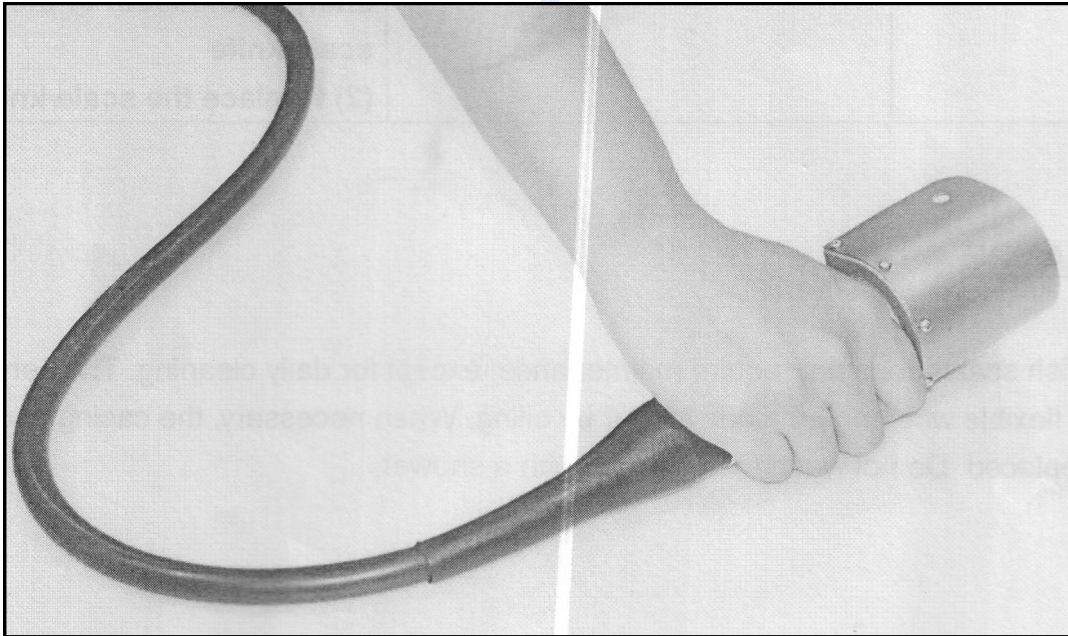
www.mefe.com.au

Unauthorized reproduction or use of information herein is strictly forbidden



MANUAL

Incorrect:



4. CLEANING AND WASHING

Disconnect the plug from the wall socket. The scaling end of the machine may be washed in warm water using detergent and a dish brush. The rubber and the machine itself may be wiped clean using a damp cloth. DO NOT use running water to clean the motor, DO NOT wet the switch and DO NOT use a pressure hose. .

5. MAINTENANCE

The Electric Shaver does not require maintenance, except for daily cleaning. The service life of the casing wire can be increased by oiling. When necessary the casing and flexible wire must be replaced. DO NOT wash the machine with a shower.

1800 669 006

www.mefe.com.au

Unauthorized reproduction or use of information herein is strictly forbidden

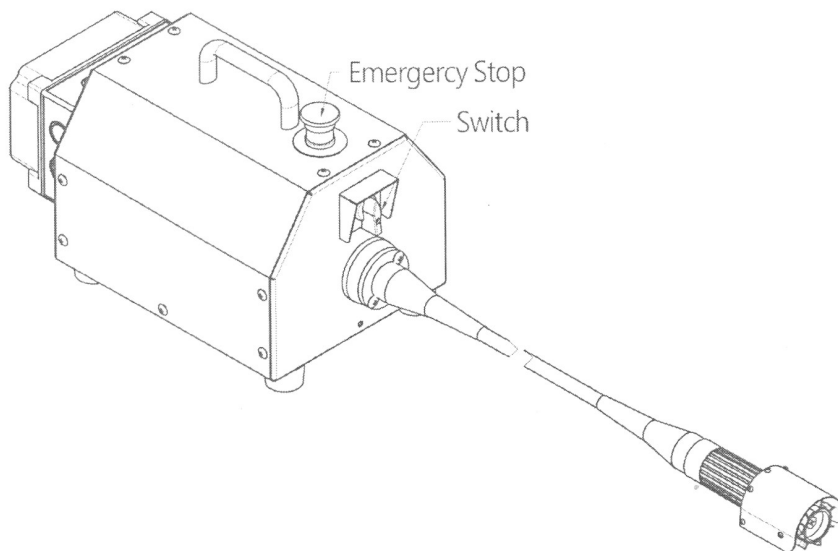


MANUAL

6. FAULT FINDING

Fault	Cause	Suggestion
The machine does not start	(a) The plug is not attached to the socket (b) The switch is broken (c) The electrical chord is broken	Contact an authorized electrician or the manufacturer.
The scraping knife does not rotate	The rubber tube is broken	Replace the rubber tube
The rubber tube is fractured	The rubber tube is broken	Replace the rubber tube
The hair will not come off	The shaving knife is blunt OR Incorrect or insufficient scalding	(a) Use a fine file to sharpen the teeth of the shaving knife (b) Replace the shaving knife

7. ELETRICAL COMPONENTS



1800 669 006

www.mefe.com.au

Unauthorized reproduction or use of information herein is strictly forbidden



MANUAL

8. SPARE PARTS



200BC41 Large Shaver Spindle COMPLETE
200BC412 Shaver Blades
200BC413 Mounting Screws



171-500-010 FOOD GRADE GREASE



200BC18 Transmission Shaft



200BC 20B DRIVE FLEX SHAFT 1.5M LONG
200BC 20D DRIVE FLEX SHAFT 2M LONG



200BC19 FLANGE Connecting Plate



200BC 20C DRIVE FLEX CASING 1.5M LONG
200BC 20E DRIVE FLEX CASING 2M LONG



200BC23 Rubber Handle

1800 669 006

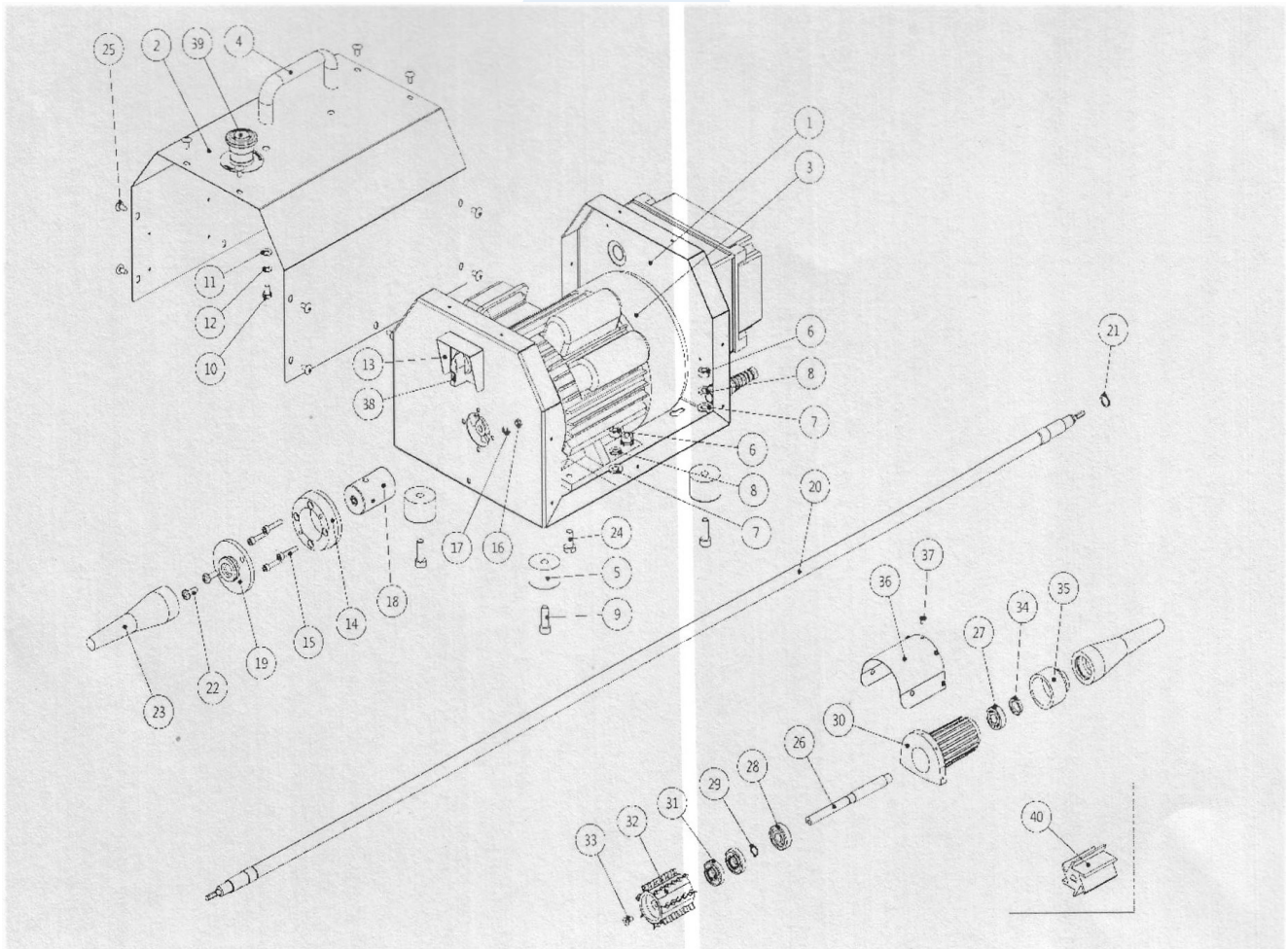
www.mefe.com.au

Unauthorized reproduction or use of information herein is strictly forbidden



MANUAL

9. EXPLODED DRAWING MODEL



1800 669 006

www.mefe.com.au

Unauthorized reproduction or use of information herein is strictly forbidden



MANUAL

NO.	ITEM	QUANTITY	NO.	ITEM	QUANTITY
1	Machine Base	1	21	Locking Ring	1
2	Machine Case	1	21	Screw	2
3	Motor	1	23	Rubber Handle	2
4	Handle	1	24	Screw	4
5	Foot Pad	4	25	Screw	14
6	Nut	8	26	Shaft	1
7	Spring Washer	8	27	Bearing	1
8	Washer	8	28	Bearing	1
9	Screw	4	29	Locking Ring	1
10	Screw	2	30	Handle	1
11	Washer	2	31	Oil Seal	2
12	Spring Washer	2	32	NOT USED	
13	Protect Cover	1	33	Screw	1
14	Bush	1	34	Nut	1
15	Screw	4	35	Bush	1
16	Nut	4	36	Cover	1
17	Spring Washer	4	37	Screw	5
18	Transmission Shaft	1	38	Switch	1
19	Flange	1	39	Emergency stop	1
20	Flexible wire set	1	41	SHAVER SPINDLE 200BC41	1

1800 669 006

www.mefe.com.au

Unauthorized reproduction or use of information herein is strictly forbidden

