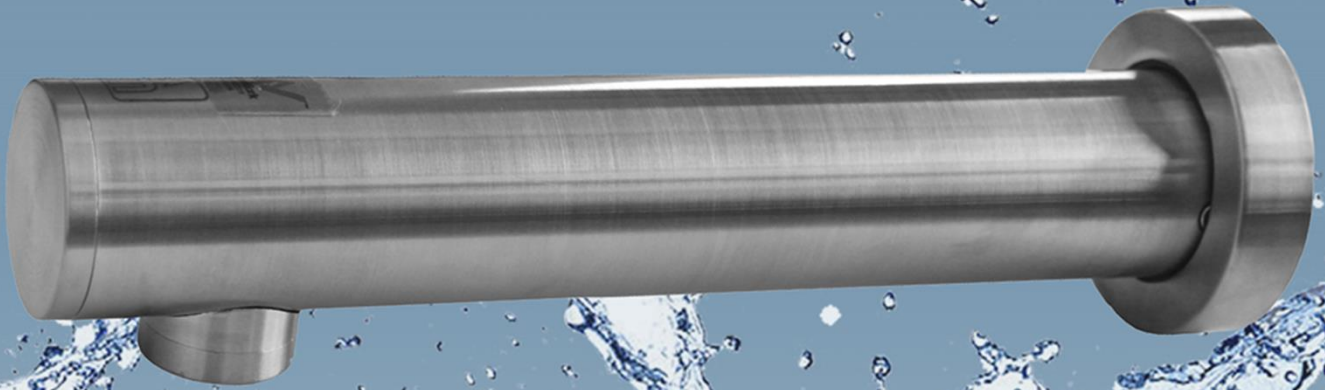
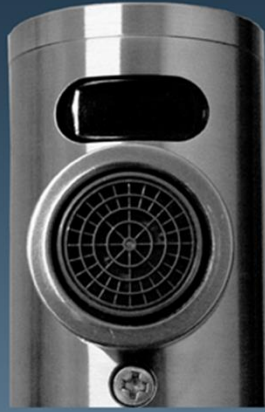


Sensor Tap – All-In-One



Up to 70% in water savings!
Hygienic – zero cross contamination.
No electrical wiring required.
No-touch and easy to use.



CAT 673031

Sensor Tap - All-in-one

Wall Mounted - Stainless Steel

Dimensions:

Tap: 6 x 24 x 4cm, 0.7kg

Boxed: 27 x 8 x 8cm, 0.8kg

Features:

Employs the latest plug and play digital infrared sensor technology.
Hygienic – zero cross contamination.
No-touch and easy to use – ideal for children, elderly & disabled
Simple installation – supplied with everything you need and easily replaces existing ½" connections.
No electrical wiring required – takes 4 x AA batteries or use the 240 V transformer included.
AUS & NZ WaterMark certified
6 star WELS water efficiency rating.

Includes:

All-in-one unit (solenoid valve, battery housing & brass housing)
Instruction manual.

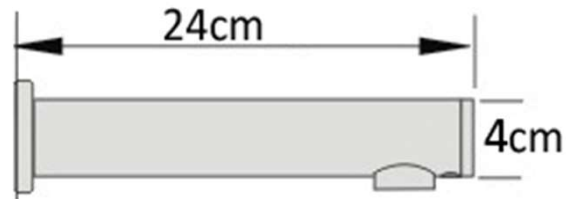
Available in two colors



CAT 673031 – Stainless Steel



CAT 673031– Matte Black



Specifications:

Wall Mounted

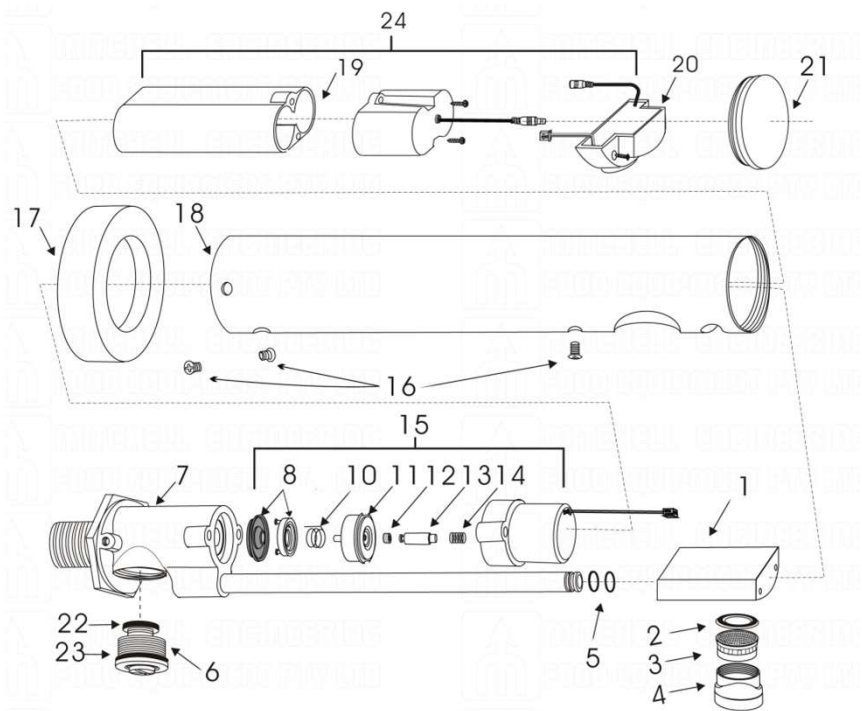
Stainless Steel

Full sealed (all-in-one unit)

Standard ½" connection

Adjustable sensing: 5cm to 15cm

Water Pressure: 0.07-0.7Mpa



CAT 673031



CAT 673031B

Our versatile and stylish Automatic Sensor Taps are well suited to virtually any environment - whether for personal or professional use. All of our taps are WaterMarked certified with a 6 star WELS water efficiency rating, signifying that the taps are nationally certified whilst also environmentally and economically friendly.



1800 669 006

info@mefe.com.au www.mefe.com.au

Tel: 07 3283 4536 Fax: 07 3283 4482

