

MEFE
MITCHELL ENGINEERING
FOOD EQUIPMENT PTY LTD

Operating Manual

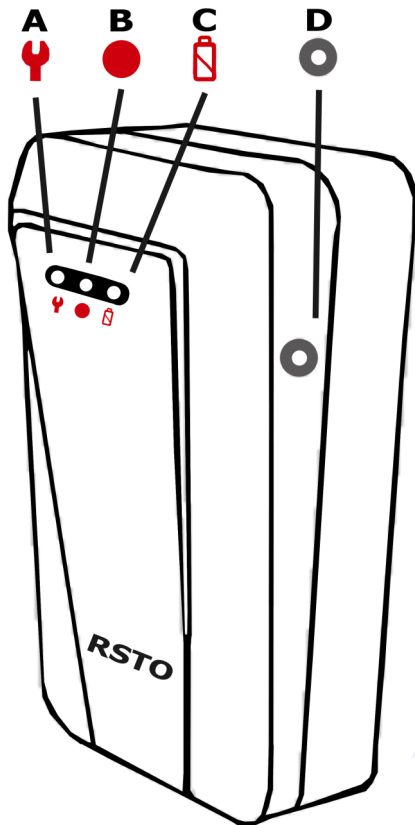


Auto Toilet Flush **For top button type cisterns**

CAT 67TB1

Revision 3

Sensor Appearance and Instruction:



A. SET UP MODE (left) - Adjust the Half/Low flush cycle time by holding a magnetic wand (part 13) against the right side (D) circular magnetic target until the desired water release is achieved. Note the speed and distance of flush motor up/down cycle and adjust accordingly.

B. PRESENCE DETECTION - A computerised Sensor measures the “time-at-the-toilet” and then activates a flush motor inside the tank which lifts the flush lever for either a half/low-flush or full/large flush as required.

C. LOW BATTERIES - It will flash when the battery is low, please replace the battery.

D. MAGNETIC TARGET (half/low flush)

NOTE 1: After setup is complete, if the half flush water volume is insufficient or too much (based on personal demand), simply repeat the Set Up Mode instructions located above at A. The memory model of sensor must be reset after replacing batteries.

NOTE 2: When computerised Sensor starts to measure the “time-at-toilet” the Sensor presence detection LED will flash for 10 seconds above (maximum flush cycle: 10 secs) by standing in front of the Sensor which then activates a flush motor inside the tank which lifts the flush lever for either a half/low flush or full/large flush as required.

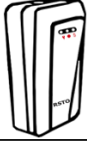



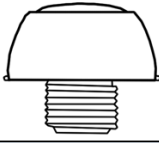




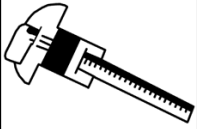
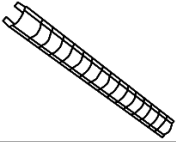
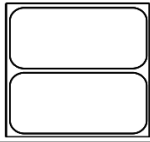
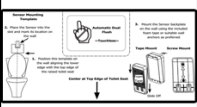
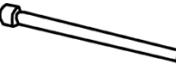

Specifications:

Model/Product name	CAT 67TB1—auto toilet flush
Power	6x AA batteries
Flush Method	Auto-induction, Two-stage flush (low/large water volume)
Detection Rang	80cm +/- 10cm
Sensor	Half Flush Timer: 10-60 secs Full Flush Timer: >60 secs Maximum Flush Cycle: 10 secs
Applicable toilet tank style	Central pressing type toilet flush button (oval or round appearance with a diameter of 33 - 53mm) located in the centre of the tank.

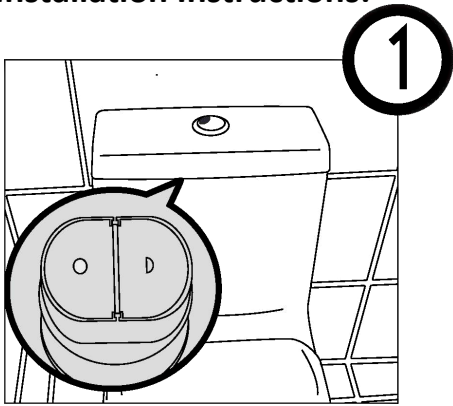
Precautions:

1. This electronic dual-flush toilet conversion system fits most top button flushing toilets.
2. The Sensor has the function of self-learning, determining whether the sensor distance has at least 100 cm above to the wall or any obstacles, otherwise it will shorten the detection to just 40-50cm.
3. Upon powering up the Sensor will automatically detect the distance in 1 min, the Sensor presence detection LED will flash, please keep any obstacles or mirrored surfaces out of the detection beam at least 100cm during detecting to prevent false direction and random flush.
4. The Sensor must not be obstructed by any reflectors, such as mirrors, glossy bright objects etc. as they can cause the distance to reduce to 30cm.
5. Please keep the detection window clean, any dirt, smudges or water drippings will affect the sensitivity of the sensor.
6. Anytime the batteries (6 standard AA alkaline) are replaced or the Sensor range needs to be recalibrated, simply repeat resetting. To prevent from false detection and random flushing, keep any obstacles or mirrored surfaces out of the detection beam.

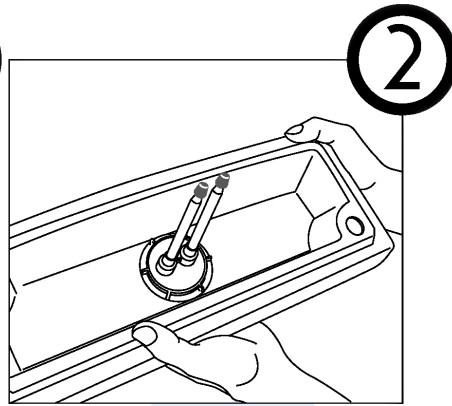
Various Parts:

No. 1		Sensor x 1	No. 2		Battery Cover x 1	No. 3		Screws of Battery Cover x 2
No. 4		Back Plate x 1	No. 5		Flush Motor x 1	No. 6		Oval Washer or Round Washer x 1 each
No. 7		Fixing Gasket x 1	No. 8		Blocks 40m x 1 20mm x 2 15mm x 2 12mm x 1	No. 9		Spin Washer x 5
No. 10		Depth Ruler x 1	No. 11		Decorative Cover x 1	No. 12		Transparent Stickers x 2
No. 13		Installation Demonstration Sticker x 1	No. 14		Magnetic Wand x 1	No. 15		Installation Instructions x 1

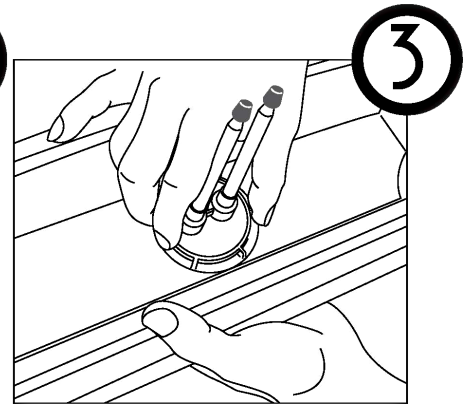
Installation Instructions:



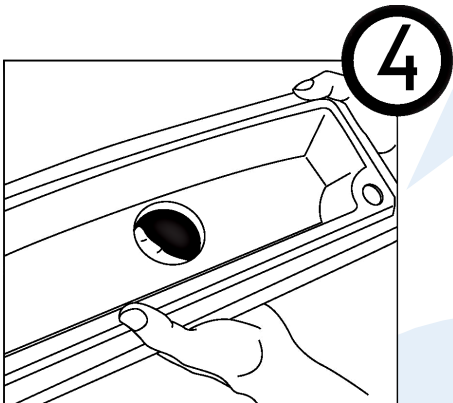
Applicable to central-pressing type toilets, the inside flush button as shown in figure 1—with low/large water volume button or single flush button.



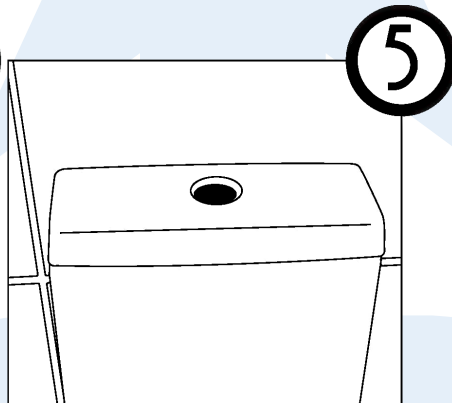
Lift the toilet tank cover and then flip to the inside.



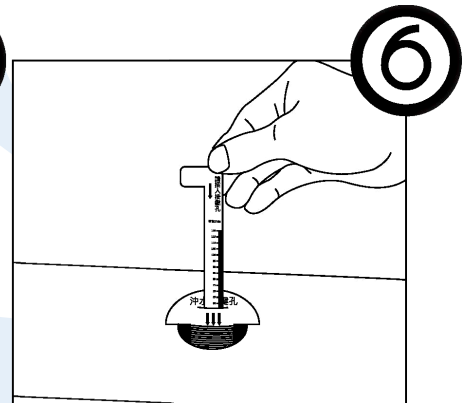
Unscrew the fixing button on the tank cover. (If your toilet or button style is different from figure above, please refer to the instruction manual for your toilet to remove flush button.)



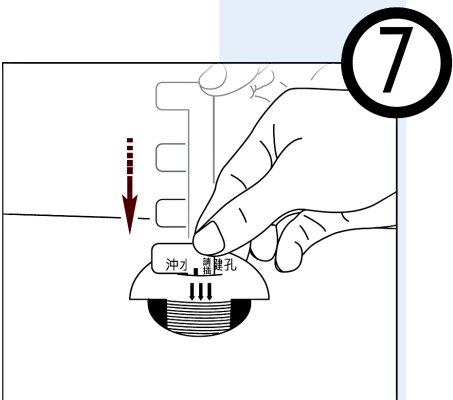
Remove the original flush button and store somewhere safe.



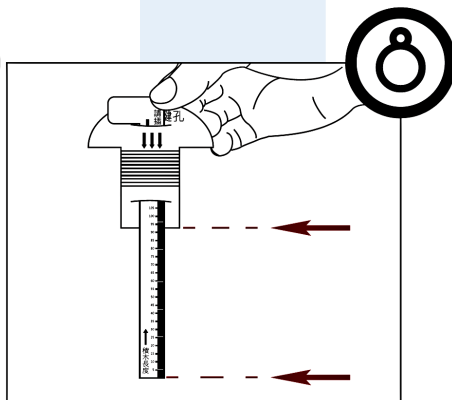
Put the tank cover back on.



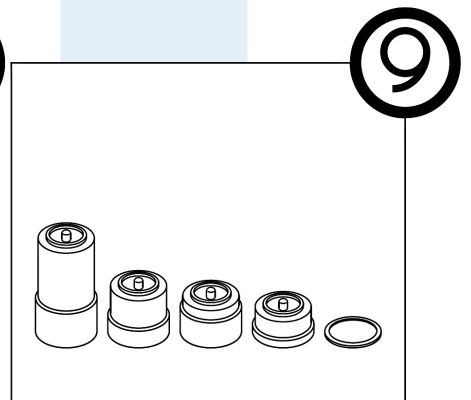
Take out the **(10)** Depth Ruler and measure the distance from top of the Flush Button hole to top of the internal button on the Flush Valve.



Place the **(10)** Depth Ruler in button hole & press downward slowly by moving the P-Ruler to touch the top of the internal button on the Flush Valve.

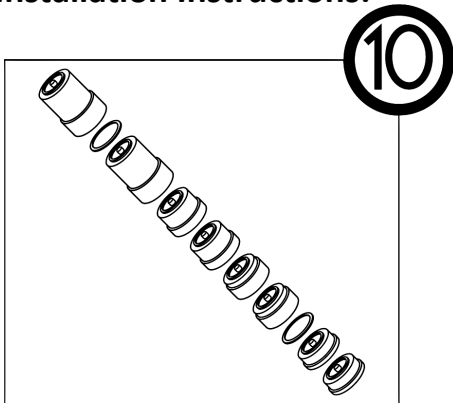


Remove the **(10)** Depth Ruler that has been measured (Arrows in figure 8 represent total length of **(8)** blocks to assemble.)

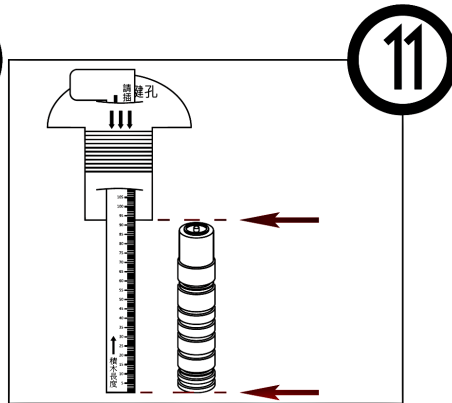


Take out the **(8)** Blocks and **(9)** Spin Washers.

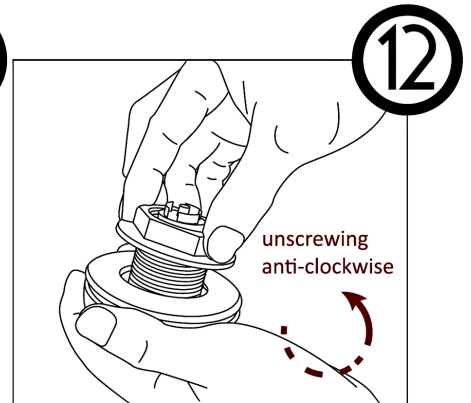
Installation Instructions:



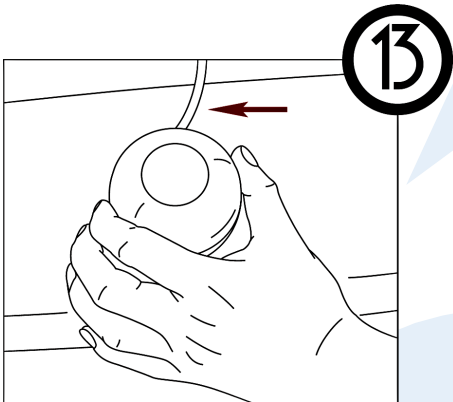
Please assemble the **(8)** Blocks and **(9)** Spin Washers together according to length that was measured by **(10)** Depth Ruler. Note: **(8)** Blocks come in different sizes, use as necessary, align to notch at top.



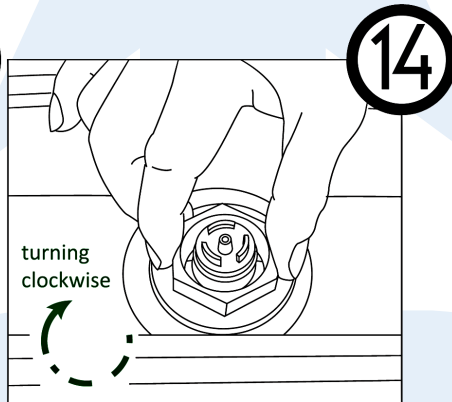
Completed Assembly



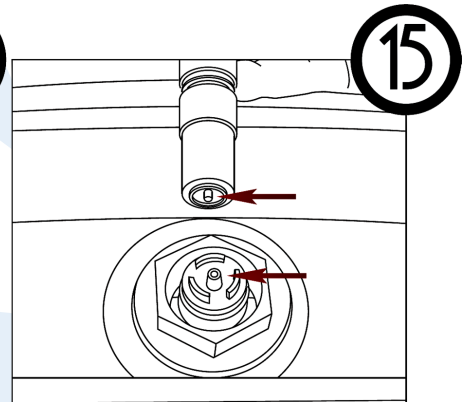
Remove the **(7)** Fixing Gasket by unscrewing anti-clockwise, and take down **(6)** Oval or Round Washer together along with **(7)** Fixing Gasket from **(5)** Flush Motor.



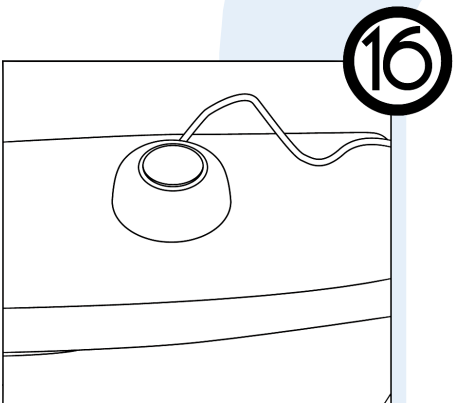
Install the **(5)** Flush Motor onto the tank cover and ensure power cable is facing the wall.



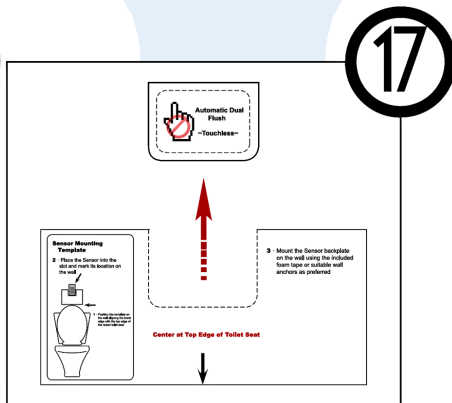
Retighten **(6)** Oval or Round Washer and **(7)** Fixing Gasket in order by turning clockwise.



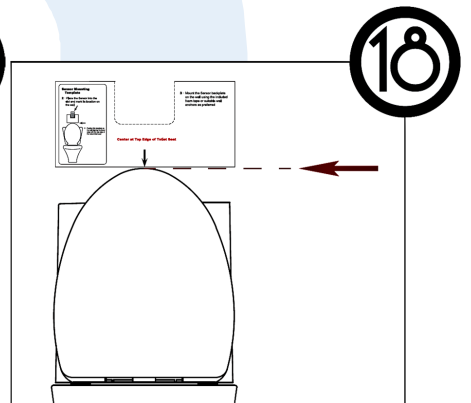
The assembly **(8)** Blocks should be vertically inserted into the centre of the **(5)** Flush Motor hole.



Replace the tank cover gently and check if bottom of assembly **(8)** Blocks on **(5)** Flush Motor, just touch the top of the internal button. Appropriately readjust the **(8)** Blocks. If tank cover is plastic, use the **(12)** Transparent Stickers on all sides between tank cover and tank body to prevent cover lifting.

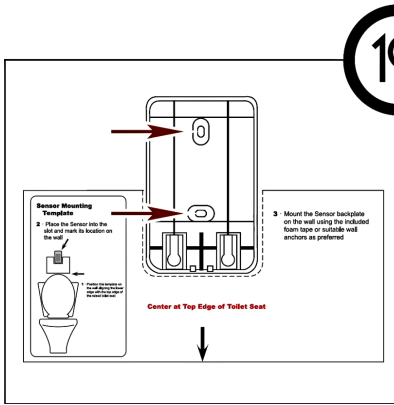


Pull out the **(13)** installation sticker, tear off the small sticker on inside of the dotted box and paste it around the toilet used as sign of warning.

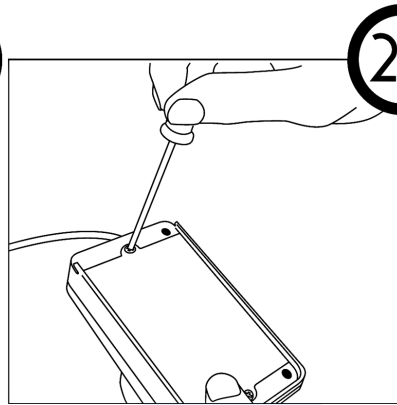


Align the bottom edge of **(13)** installation demonstration sticker to the top edge of toilet lid, and affix to the wall.

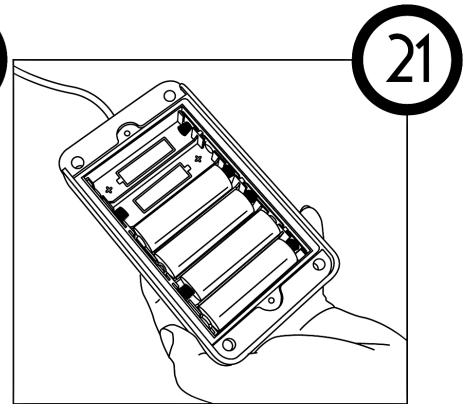
Installation Instructions:



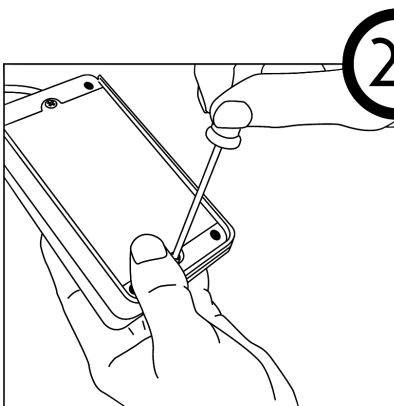
Remove the **(4)** Back plate and align with the groove in the middle of **(13)** Install sticker. Affix to the wall using your preferred method, then peel off the **(13)** Install sticker from wall.



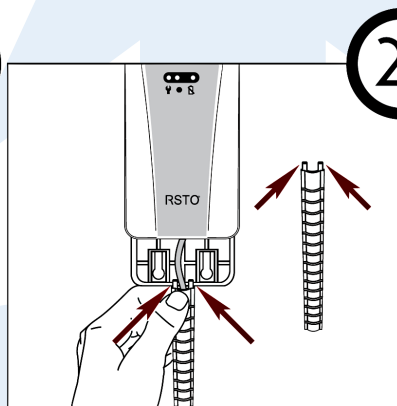
Remove the **(1)** sensor from its wall plate by sliding upward and off. Remove the **(2)** battery cover with small Philips screwdriver.



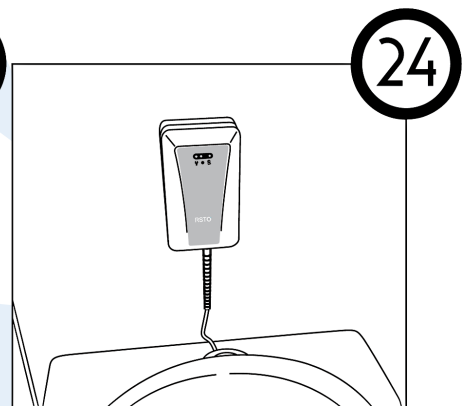
Place 6 x AA batteries in and check that the silicone gasket inside the battery compartment is not out of place and is in good condition.



Reinstall the **(3)** screws of **(2)** battery cover and replace the sensor back on the wall.



Hide the power cable in the **(11)** decorator cover and hook the groove of back plate with claw on the **(11)** decorator cover.



After installation if you feel the **(11)** decorative cover is too long, cut the horizontal grooves on the **(11)** decorator cover to the required length.

Trouble Shooting:

Issue	Possible Cause	Solution
Replace battery indicator flashes	Lack of Power	Replace the batteries
	Body Failure	Take out batteries first, wait for 30 minutes then reload the machine, let the sensor automatically set again.
Induction / Power indicator no flicker, no action	Body Failure	Take out batteries first, wait for 30 minutes then reload the machine, let the sensor automatically set again.
	Incomplete during the initial automatic setting process	
	Insufficient power or incorrect battery polarity installation	Please replace the battery. Please check if the positive and negative batteries are installed correctly.
	The battery is not covered	Please pay attention to whether the battery cover is stuck or not closed.
	Fixed obstacles (such as toilet paper) within 10cm of the front of the sensor	Please remove the obstacles and keep the distance of 130cm or more. The system will automatically reset and return to normal after 30 minutes.
	The sensor detects obstacles or reflective objects (mirrors, walls, boards, cabinets or various fixtures)	Please remove obstacles mirrors or reflective objects and keep a distance of at least 130cm
Sensing / Power indicator blinks continuously	The sensor is placed too low and is blocked by the toilet cover.	Please adjust the sensor position so that the sensor window exceeds the top edge of the toilet lid.
	When the system is automatically set, it senses someone or a dynamic object.	Take out batteries first, wait for 30 minutes, then reload it, let the sensor automatically set again, make sure there is no object within 130 cm in front of the sensor.
	Sensor surface has stains	Please be careful to avoid scratching, so as not to affect the infrared sensing distance.
	The toilet in which the sensor is installed is less than 130 cm from the wall.	A toilet with a minimum of 130 cm or more from the wall in front of the sensor can be used.
Battery Life is too short	Bad Battery	Please replace the battery
	Lack of power	Please replace the battery (use the lithium or alkaline battery produced within half a year to maintain the best use time).
Not sensing or need to be very close	Sensing window surface with stains or water droplets	Gently wipe the sensor window to avoid scratching, so as not to affect the sensing window
	There is an obstacle in front of the sensor when it is automatically set for the first time.	Take out the battery first, wait for 30 minutes, then re-load it, let the sensor automatically set again, make sure there are no obstacles within 130cm of sensor.