



**Mechanical engineering  
Scalding, slaughtering and  
stunning systems**



**Paunch washing machine**

**Instruction manual**

# Index

<b>1 GENERAL DIRECTIONS</b>	<b>3</b>
1.1 USING THE OPERATING INSTRUCTIONS	3
1.2 STRUCTURE OF THE SAFETY INSTRUCTIONS	3
<b>2 LEGAL INFORMATION</b>	<b>4</b>
2.1 LEGAL INFORMATION	4
2.1.1 WARRANTY CLAIMS	4
2.1.2 DISCLAIMER OF LIABILITY	4
2.1.3 LIABILITIES FOR DEFECTS CLAIM	4
2.2 OPERATING INSTRUCTIONS	4
2.2.1 INTENDED USE	5
2.3 PERSONNEL QUALIFICATION	6
<b>3 SAFETY</b>	<b>7</b>
3.1 PERSONAL PROTECTIVE EQUIPMENT	7
3.2 INFORMATION ABOUT SPECIFIC HAZARDS	9
3.2.1 ELECTRICITY	9
3.2.2 PNEUMATIC/HYDRAULIC	9
3.2.3 NOISE	9
3.2.4 OILS, GREASES AND OTHER CHEMICAL SUBSTANCES	9
3.3 GENERAL HAZARDS	10
3.4 SAFETY DEVICES	11
3.5 BEHAVIOR IN DANGEROUS SITUATIONS AND AFTER AN ACCIDENT	12
<b>4 TECHNICAL DATA</b>	<b>13</b>
<b>5 TRANSPORT</b>	<b>14</b>
5.1 UNPACKING	15
5.2 PACKAGING MATERIAL	15
5.3 TRANSPORT INSPECTION	15
5.4 ENVIRONMENTAL PROTECTION	15
5.5 TRANSPORT	15
5.6 WEIGHT FOR TRANSPORT	15
5.7 LIFTING GEAR	16
<b>6 INSTALLATION</b>	<b>17</b>

<b>6.1 ELECTRICAL CONNECTION</b>	<b>17</b>
<b>6.2 INITIAL STAR-TUP</b>	<b>17</b>
<b>7 OPERATION</b>	<b>18</b>
<b>7.1 SWITCH ON</b>	<b>19</b>
<b>7.2 OPERATION</b>	<b>19</b>
<b>7.2.1 OPERATION PAUNCH CLEANING MACHINE</b>	<b>19</b>
<b>7.3 SWITCH OFF</b>	<b>19</b>
<b>8 CLEANING</b>	<b>20</b>
<b>8.1 CLEANING WORK</b>	<b>21</b>
<b>9 MAINTANCE</b>	<b>22</b>
<b>9.1 MAINTANCE TABLE</b>	<b>22</b>
<b>9.2 DAILY MAINTENANCE WORK</b>	<b>23</b>
<b>9.2.1 MAIN SWITCH</b>	<b>23</b>
<b>9.3 MAINTENANCE WORK WEEKLY</b>	<b>23</b>
<b>9.3.1 VISUAL CHECK</b>	<b>23</b>
<b>9.3.2 WATER CONNECTION</b>	<b>23</b>
<b>9.3.3 LUBRICATE BEARING POINTS</b>	<b>24</b>
<b>10 MALFUNCTION</b>	<b>25</b>
<b>10.1 BEHAVIOR IN CASE OF A FAULT</b>	<b>26</b>
<b>11 SPARE PARTS</b>	<b>27</b>
<b>12 SERVICE</b>	<b>28</b>
<b>13 WARRANTY</b>	<b>29</b>

## 1 General directions

### 1.1 Using the operating instructions

The operating instructions are a part of the product. They contain important information for operation and service. The operating instructions are addressed to all persons who are instructed to carry out work on the machine / system. for example:

- Operation, including setup, troubleshooting during the work processes, removing production waste, maintenance and care, disposing of supplies and auxiliary material
- Maintenance (service, inspection, repair)
- Transport

A readable copy of the operating instructions must be accessible at the place where the system / machine is used. Ensure that the persons responsible for the system and its operation as well as persons who, in their own responsibility, work at and with the machine / system have read and understood the entire operating instructions.

Please contact Mitchell Engineering if you need further clarification or additional information.

### 1.2 Structure of the safety instructions

The safety information in these operating instructions is structured as follows:

---

	Indicates a potentially dangerous situation which will lead to death or severe injuries if not avoided.
	Indicates a possibly dangerous situation which can lead to death or injuries if not avoided.
	Indicates a potentially dangerous situation which can lead to minor or light injuries if not avoided.
	Indicates a potentially dangerous situation which can lead to damage to objects and the environment if not avoided. Provides helpful information about the products.

## **2 Legal information**

### **2.1 Legal information**

General information about safety and accident prevention can be found in the "Basic principle of prevention" (BGV A1) of the professional association. In addition to the operating instructions, the following regulations must be observed by the personnel employed:

- Generally applicable specifications for accident prevention
- Binding regulations for environmental protection
- Supervisory and notification obligations regarding the consideration of special features in the operation (e.g. with regard to work organization, workflows, personnel employed etc.)

Furthermore, all national stipulations regarding accident prevention, as well as other generally recognized safety engineering and occupational health regulations and stipulations for the operation of machines and systems must be observed. Before taking up work, the personnel assigned to work on the machine/system must have read attentively and understood the operating instructions, in particular the chapter "Safety information".

#### **2.1.1 Warranty claims**

The warranty conditions for the machine / system are defined in the contracts. In order not to make the warranty claim void, all care, maintenance and inspection work must be carried out in accordance with Chapter "Maintenance" at the specified intervals. Having satisfied the installation and connection requirements specified by Mitchell Engineering is also a prerequisite for a warranty claim. Mitchell Engineering does not accept any liability for any damages / failures that result from improper use, improper spare parts, or modifications by the customer that were not authorized by the supplier. The warranty is void in these cases.

#### **2.1.2 Disclaimer of liability**

Observing the operating instructions is the basic requirement for a safe operation of the machine / system and for reaching the specified product properties and features. Mitchell Engineering do not accept any liability for injuries, property damages, or pecuniary losses that result from non-observance of the operating instructions. Any liability for defects is excluded in such a case.

#### **2.1.3 Liabilities for defects claim**

Compliance with the operating instructions is the precondition for smooth operation and the granting of any claims under liability for defects. Read the operating instructions before you start working with or on the machine / system.

## **2.2 Operating instructions**



### **Danger from improper use**

Every use of the machine beyond the intended use and/or different use of the machine can bring about dangerous situations.

- All users must read and understand the enclosed operating manual.
- The staff must attend regular training.

---

### **2.2.1 Intended use**

The rumen cleaning machine is used exclusively for washing, scalding and cleaning of rumen, the bowels between appendix and colon, omasum, and pig, calve and mutton stomachs.

Intended use also includes the observance of these operating instructions and the compliance with the inspection and maintenance conditions.

Use the machine only when it is in a technically faultless condition. Strict compliance with the safety regulations and operating instructions is mandatory during assembly, operation, and maintenance. Immediately eliminate any defects that could impair the safety of men and machine. Shut down the machine immediately if there are any malfunctions during operation. Immediately report all faults to the persons responsible.

Modifications, attachments, and conversions of the machine that may affect the safety are not permitted. Never remove safety devices.

The operating company must ensure that only authorized persons work on the machine. The legally required minimum age of the machine operators must be observed.

## 2.3 Personnel qualification



### **Risk of injury in case of inadequate qualification!**

Inappropriate handling can lead to severe personal injuries and/or considerable material damage.

- Have special activities carried out only by those persons designated in the respective chapters of this operating manual.
- It is the responsibility of the operator to instruct and train the staff in the individual areas of responsibility.
- The staff must attend regular training.

---

In the operating instructions, the following qualifications are designated for the different spheres of activities:



### **Specialist personnel**

Specialist personnel are in a position to carry out the work assigned to them due to their specialist training, knowledge and experience, as well as knowledge of the relevant stipulations, and are able to identify and avoid possible dangers independently. In these operating instructions, differentiation is made between the three various types of specialist personnel:

1. Qualified technical personnel (mechanical work)
2. Qualified electrical personnel (electrical work)
3. Cleaning personnel (cleaning)



### **Instructed person:**

Instructed persons have been taught in instruction sessions by the operating company about the tasks assigned to them, and about the possible dangers involved in inappropriate behavior.



### **Trained personnel:**

Trained personnel have been made familiar with the functionality of the machines and their possible dangers in training sessions by the manufacturer.

## 3 Safety

General information about safety and accident prevention can be found in the "Basic principle of prevention" (BGV A1) of the professional association. In addition to the operating instructions, the

- generally applicable specifications for accident prevention,
- binding regulations for environmental protection,
- supervisory and notification obligations regarding the consideration of special features in the operation (e.g. with regard to work organization, workflows, personnel employed etc.),

must be complied with by the personnel employed.

Furthermore, all national stipulations regarding accident prevention, as well as other generally recognized safety engineering and occupational health regulations and stipulations for the operation of machines and systems must be observed.

Before taking up work, the personnel assigned to work on the machine/system must have read attentively and understood the operating instructions, in particular the chapter "Safety".

### ! NOTICE

#### Warranty and liability claim

Failure to observe the safety instructions in the operating manual makes warranty and liability claims null and void!

### 3.1 Personal protective equipment

During work, personal protective equipment must be worn in order to minimize dangers to health.

- Always wear the personal protective equipment that is necessary for the work you are doing.
- Comply with the signs regarding personal protective equipment put up with in the working area.



#### Ear protection

Ear protection protects against noise. In case of non-compliance, there is the risk of a reduction of hearing ability (hearing loss reversible after prolonged rest), and with longer exposure, risk of irreversible loss of hearing.



#### Protective clothing

For certain tasks, personnel must wear special protective clothing in order to protect themselves against a number of risks.

If special protective clothing must be worn at a workplace, corresponding instruction signs must be put up.



#### Safety glasses

Safety glasses are intended to protect the eyes against potential damage, for example from strong light, chemicals, dust, chips, weather impact etc.





### **Safety helmet**

Wear a safety helmet during all work that involves the risk of head injuries from falling, toppling or ejected objects, from swinging loads, or from knocking against obstacles. Always wear a safety helmet when staying or working at the machine.



### **Safety gloves**

Safety gloves are intended to protect the hands from injuries when working at the system.



### **Non-slip safety shoes**

Safety shoes are used for protection against heavy falling parts and slipping on slippery ground.



### **Risk of injury from improper clothing!**

Severe or fatal injuries can be caused when clothes or jewelry are seized or pulled in.

- Wearing long hair open, or wearing loose clothing is forbidden for persons who work at the machine
- Risk of injury for example by getting caught in moving or stationary system components.
- Wearing jewelry (rings, necklaces), wristwatches or similar objects can lead to accidents.
- Tie your hair back and wear a cap/hat.
- Remove jewelry, wristwatches, etc.
- Wear tight-fitting clothing.



### **Do not clean working clothes with compressed air!**

It is forbidden to clean working clothes with compressed air; risk of injury as the air escapes at a high speed.



## 3.2 Information about specific hazards

### 3.2.1 Electricity

**NOTICE!** Only qualified electricians are allowed to work on electrical components.

**DANGER!** In case of faults in the electrical power supply, switch off machine/system immediately!

**CAUTION!** Prior to starting any inspection, maintenance or repair work, it is mandatory, if required, to de-energize the machinery and plant components to be worked on. First verify that the switched-off parts are de-energized and then ground and short-circuit and isolate any adjacent live parts!

**CAUTION!** The electrical equipment of a machine/system must be inspected/checked regularly. Defects such as loose connections or scorched cables must be repaired immediately.

**NOTICE!** If working on live components is inevitable, a second person must be present so that someone can press the main switch with shunt tripping function in an emergency. Cordon the working area off with a red-and-white safety chain and put up a warning sign. Use insulated tools only!

**WARNING!** When working at high-voltage assemblies, disconnect the power supply. Then connect the supply cable to ground and short-circuit the components e.g. capacitors with a grounding rod!

---

### 3.2.2 Pneumatic/hydraulic

**NOTICE!** Only qualified experts are allowed to work on the pneumatic /hydraulic equipment.

**CAUTION!** Regularly check all lines, hoses, and screwed connections for leaks and externally visible damage! Immediately repair all defects!

**CAUTION!** Prior to starting any repair work, depressurize the system sections and pressure lines (compressed air/hydraulic system) that need to be opened according to the assembly descriptions!

**CAUTION!** Compressed-air lines / hydraulic lines must be installed and mounted in an expert manner! Do not mix up the connections! The fittings as well as the length and quality of the hoses must comply with the requirements.

---

### 3.2.3 Noise

**CAUTION!** Noise insulation equipment at the machine/system must be in protection position during operation.

**NOTICE!** Wear the specified personal ear protection!

---

### 3.2.4 Oils, greases and other chemical substances

**NOTICE!** Comply with the applicable safety regulations when handling oils, greases and other chemical substances!

**WARNING!** Be careful when handling hot operating materials and additives (risk of burning and scalding)!

### 3.3 General hazards

Comply with the safety instructions in this document and the warnings in further chapters to mitigate health risks and avoid dangerous situations.

#### **DANGER**



#### **Warning of dangerous electrical voltage!**

There exists a danger to life if live parts are touched. Insulation damage or individual parts can be dangerous to life.

- Touching of damaged insulation or live parts
- Basically the electric control must be separated from the network prior to each intervention in the electrical or mechanical part of the plant.
- Some circuits (e.g. Lightings of the switch cabinet) are also live when the main switches are switched off.
- If it is necessary due to technical reasons to implement work on the live parts of electronics, then insulating mats and insulating tool must be used. Such work may only be executed by at least two skilled electricians. In case of emergency, the plant must be switched off such that it is zero potential.(with the main switch)

#### **WARNING**



#### **Warning - risk of getting pulled in!**

Risk of getting pulled into the machine during rotating or translational movements of the machine. This can cause severe, irreversible injuries.

#### **CAUTION**

#### **Warning against the danger of getting squashed**

There exists a danger of getting squashed that can lead to injuries.

- There is a danger of getting squashed while working on the machine.
- While working on the machine, the safety distances against getting squashed and getting squeezed must be complied with.

### 3.4 Safety devices

Safety devices are provided to ensure optimum safety during the entire service life of the machine. It is strictly forbidden to disable the safety devices, even in cases where they make work processes more tiresome. Safety is only ensured when all safety devices are intact and installed according to their intended use.

 **WARNING****Risk of death in case of inoperative safety devices!**

Severe or fatal injuries if the machine does not stop.

- Safety devices must be functional at all times.
- Check whether the safety devices are functional and installed correctly before starting to work.

 **WARNING****Risk of death from uncontrolled restart.**

Severe or fatal injuries from uncontrolled restart.

Before restarting the machine:

- The cause of an emergency stop must be removed.
- Safety devices must be completely re-installed as intended.
- All safety devices must be fully functional.
- Ensure that no persons are in the danger zone of the machine.



The following safety devices have been installed

**Main switch:**

When you press the main switch, the entire system/electrical equipment is disconnected from the electrical/AC power supply.

*Illustration: Main switch*

### 3.5 Behavior in dangerous situations and after an accident

#### Preventive measures

- Always be prepared for possible accidents!
- Keep first-aid equipment (first-aid box, blankets, etc.) at hand.
- Keep access routes for rescue vehicles free.

#### If an accident does happen: Do the right things

- Press the emergency stop button at once.
- If danger to your own health is excluded, rescue other persons from the danger zone.
- Initiate first aid actions


In case of an Accident	
Keep Calm	
1. Report the accident	 <b>Phone: 000</b> WHERE did it happen? WHAT happened? HOW MANY injured persons? WHAT TYPES of injuries? Wait for further inquiries!
2. Provide First Aid	 Secure the accident site Take care of the injured Follow instructions
3. Further Arrangements	Instruct the emergency services Keep away onlookers

Illustration: Accident plan

Behaviour in case of Fire	
Keep Calm	
1. Report the fire	 <b>Activate the fire alarm</b> <b>Phone: 000</b> WHERE is the fire? WHAT is burning? HOW MUCH is burning? WHICH DANGERS exist? Wait for further inquiries!
2. Seek Shelter	 <b>Fire exit</b> Take vulnerable people with you Close doors, DO NOT use lifts Follow marked escape routes Follow instructions
3. Attempt to extinguish the fire - if safe to do so	Use fire extinguishers, fire hoses and other means/devices for fire fighting

Illustration: Rescue plan

#### ! NOTICE

We point out that the operating company must install all the information signs (such as fire extinguishers, first-aid box, ...) that are required to take efficient first-aid or fire-fighting actions in the event of an accident or hazard.

## 4 Technical data

Description	Data
Weight:	120 kg
Voltage:	400 V / 50 Hz
<b>Connection:</b>	
Cold water:	3/4"
Hot water:	3/4"
Water pressure:	min. 3 bar
<b>Power consumption:</b>	
Drive:	2,2 kW
Water consumption:	ca. 1,1 m3

## 5 Transport

### **Danger! Transport by untrained personnel!**

The operation of the lifting means by untrained personnel can result in fatal injuries.



- Only trained personnel may operate the lifting means.
- Check the qualifications of staff prior to starting work.
- It is sensible to have at least one banksman on site to make transportation safer and easier.

---

### **Caution: Suspended loads!**

Working under suspended loads can result in serious injuries.



- Nobody is allowed to stay under a suspended load.
- The operator must ensure that nobody enters the danger zone.

---

### **Squeezing hazard.**

Carelessness can result in body parts being pinched off.



- Body parts can get between the lifted loads.
- To protect yourself from contusions or pinching, observe the safety distances specified during transport and storage of lifted loads.

---

### **Risk of damage from improper transport!**

Improper transport can cause significant damage to the machine and other objects.



- To make transportation and storage safe, observe the following:
- When unloading packages during delivery and transport within the factory, proceed with care and comply with the symbols attached on the machine.
- For all machine transport, only use the equipment intended for the purpose (fork lift pockets, transport lugs etc.).
- Never exceed the permissible maximum lifting capacity of the lifting gear.
- Observe the icons on the packaging.
- Intermediate storage only under tarps, in sheds, on wood or other bases, dry and free of frost.
- Theft-proof storage place.

## 5.1 Unpacking

When unpacking, make sure not to damage the package. Use of strong force is therefore not permitted.

## 5.2 Packaging material

Dispose of the used packaging material in accordance with the local regulations.

## 5.3 Transport inspection

Check the delivered goods immediately upon receipt for completeness and transport damage.

Use the following procedure if you detect a transport damage:

- Do not accept the delivery, or accept it with reservation.
- Note down the extent of the damage on the transport documents or on the delivery note of the forwarding company.
- The manufacturer must be informed immediately.

---

### ! NOTICE

**Lodge a complaint immediately after detection of a defect. Compensation for damage can only be claimed inside the valid complaint time.**

---

## 5.4 Environmental protection

When disposing waste created

- during delivery
- during installation and assembly
- of the machine/system

comply with all national regulations.

---

## 5.5 Transport

The paunch cleaning machine will send by courier. Use a forklift to move the package.

---

## 5.6 Weight for transport

Weight: 120 kg



## 5.7 Lifting gear

### ! NOTICE

Use only suitable lifting gear for transport. Do not exceed the maximum carrying capacity of the lifting gear.

## **6 Installation**

### **Warning of dangerous electrical voltage!**

There exists a danger to life if live parts are touched. Insulation damage or individual parts can be dangerous to life.

 **DANGER**



- Touching of damaged insulation or live parts
- Basically the electric control must be separated from the network prior to each intervention in the electrical or mechanical part of the plant.
- Some circuits (e.g. Lightings of the switch cabinet) are also live when the main switches are switched off.
- If it is necessary due to technical reasons to implement work on the live parts of electronics, then insulating mats and insulating tool must be used. Such work may only be executed by at least two skilled electricians. In case of emergency, the plant must be switched off such that it is zero potential.(with the main switch)

---

### **Danger to life from incorrect installation**

Incorrect installation can cause severe and even fatal injuries.

 **WARNING**

- Install carefully and follow the instructions.
- Observe the instructions in the operating instructions
- Follow the instructions to perform installation.

---

### **6.1 Electrical connection**

Installation and connection of the machine must only be carried out by skilled electric personnel considering the effective regulations for electric installation and electric connection. When connecting the paunch cleaning machine take care that the cleaning discs run counterclockwise, because otherwise an optimum cleaning cannot be guaranteed.

---

### **6.2 Initial start-up**

The machine was tested in the company. Check proper electric assembly as per the directives of the customer and the local regulations. Before initial start-up check if

- The machine is cleaned from the dirt of the building phase.

## 7 Operation

### **WARNING**

#### **Danger to life from improper operation!**

Improper operation can lead to severe or fatal injuries.

- Comply with operating steps.
- Covers and protective devices must be installed and functional.
- Repair faults only when the machine is in a safe state.
- Carefully read the manual and operate the machine exactly as specified in the operating instructions.
- Prior to starting work, ensure that all covers and protective devices are installed and function correctly.

### **WARNING**

#### **The paunch cleaning machine can however cause dangers, if it is improperly used by unskilled personnel or if it is used for inappropriate application.**

The paunch cleaning machine is solely used for cleaning paunch.

### **WARNING**



#### **Warning - risk of getting pulled in!**

Risk of getting pulled into the machine during rotating or translational movements of the machine. This can cause severe, irreversible injuries.

### **CAUTION**

#### **Warning against the danger of getting squashed**

There exists a danger of getting squashed that can lead to injuries.

- There is a danger of getting squashed while working on the machine.
- While working on the machine, the safety distances against getting squashed and getting squeezed must be complied with.

### **CAUTION**



#### **Warning against the danger of slipping**

Slipping in the machine area can lead to injuries

- There exists a danger of slipping due to injuries and/or cleaning water on the floor.
- Always wear skid-proof safety shoes while working in the machine area.

## 7.1 Switch on

The “MEFE-paunch cleaning machine” Type P-15 is suitable for washing, scalding and cleaning of bellies, guts, omasum, guts and paunch of sheep, pigs, calves and mutton.

<p><b>Instructed personnel</b></p> <p>Protective gear:</p> <ul style="list-style-type: none"> <li> - Slip resistant Protective shoes</li> <li> - Safety helmet</li> </ul>	
---	---

Before switching on the paunch cleaning machine, the mixed battery must be open to supply the paunch cleaning machine with water.

Switch on the machine with the main switch (I).



*Illustration: Main switch*

## 7.2 Operation

<p><b>Instructed personnel</b></p> <p>Protective gear:</p> <ul style="list-style-type: none"> <li> - Slip resistant Protective shoes</li> <li> - Safety helmet</li> </ul>	
---	--

### 7.2.1 Operation paunch cleaning machine

After removal of fat from the belly, the fold in the rumen is taken out manually. You can then throw 1 rumen into the running machine for scalding and cleaning. A water temperature of approximately 62° C is required for this initially. The bellies are scalded limp white after 4-6 minutes. It is important for the rumen to come in contact with clear water so that they may be cooled quickly for color retention.

## 7.3 Switch off

<p><b>Instructed personnel</b></p> <p>Protective gear:</p> <ul style="list-style-type: none"> <li> - Slip resistant Protective shoes</li> <li> - Safety helmet</li> </ul>	
---	---

At first the main switch must switch to 0 to turn off the paunch cleaning machine.

After switch off, the mixed battery must be closed.



*Illustration: Main switch*

## 8 Cleaning

### Warning from irritants or harmful substances!

Cleaning substances contain chemicals that can irritate your skin or damage your health.

#### WARNING



- Observe the instructions of the manufacturer of the chemical products when using chemicals (acids, lyes) and solvents.
- Use only chemical products that can not lead to corrosion when they are used as intended. Such substances have a caustic effect (protective clothing, protective goggles) and can produce noxious vapors and affect the safety of electric equipment by biting into insulation material.

⇒ When working with detergents, be sure to wear the protective clothing recommended by the detergent manufacturer.

---

### Warning against the danger of slipping

Slipping in the machine area can lead to injuries

#### CAUTION




- There exists a danger of slipping due to injuries and/or cleaning water on the floor.
  - Always wear skid-proof safety shoes while working in the machine area.
- 


#### ! NOTICE

Only persons who have thoroughly been trained in handling the machine are allowed to clean the machine.  
On the basis of the operating instructions, cleaning personnel must be informed of the risk of injuries, and must be trained and instructed accordingly.  
All safety regulations must be observed when cleaning the machine.

## 8.1 Cleaning work

**Cleaning personnel** 

Protective equipment:

-  - Non-slip safety shoes
-  - Safety helmet
-  - Protective clothing

Cleaning intervals	Cleaning work	Personnel
Daily after slaughter	Clean the paunch cleaning machine with a flush water out of a water hose after switching off the electric system. After the primary cleaning clean the inner room with high pressure water.	Cleaning personnel

### ! NOTICE

**You had to pay attention when you clean the electric elements (switch, Tableaus, drive) with water that they never be cleaned with high pressure. Defects or malfunctions due to improper cleaning of electrical devices with high-pressure equipment shall exclude any liability!**

## 9 Maintenance

### Danger of injury by incorrectly executed maintenance work!

#### WARNING

- Incorrect maintenance can lead to severe personal or material damage.
- Prior to the beginning of the work on the machine and its control, the drive sand additional devices must be secured against unintended switching on.
- Ensure adequate installation clearance before beginning the work.
- Take care of the orderliness and cleanliness on the installation site! Loose parts lying on or around each other and tools are accident sources.
- Maintenance on the machine may only be undertaken by persons who were trained accurately in the handling of the machine.

### Warning against the danger of slipping

Slipping in the machine area can lead to injuries

#### CAUTION



- There exists a danger of slipping due to injuries and/or cleaning water on the floor.
- Always wear skid-proof safety shoes while working in the machine area.

**NOTICE!** Never modify any of the switching elements, control or regulation devices. This can affect the operability of the system. Mitchell Engineering will not accept any resulting damage and liability claims.

Note the following for environmental safety instructions while implementing maintenance work:

- Remove the escaping or excess fat at the lubrication points and dispose as per the locally applicable regulations.
- Catch the replaced oils in suitable containers and dispose as per environmental regulations.
- Dispose any incidental packaging material properly.

### 9.1 Maintenance table

Maintenance cycle	Additional information	
Daily	9.2.1	Main switch
Weekly	9.3.1	Visual check
	9.3.2	Water connection
	9.3.3	Bearing points

## 9.2 Daily maintenance work

### 9.2.1 Main switch

<p><b>Instructed personnel</b></p> <p>Protective gear:</p> <ul style="list-style-type: none"> <li> - Slip resistant Protective shoes</li> <li> - Safety helmet</li> </ul>	
---	---

#### Carry out functional testing

In case it is defective, change the main switch (Qualified electrical personnel).



Illustration: Main switch

## 9.3 Maintenance work weekly

### 9.3.1 Visual check

<p><b>Technical experts</b></p> <p>Safety equipment:</p> <ul style="list-style-type: none"> <li> - Skid proof Safety shoes</li> <li> - Safety helmet</li> <li> - Safety gloves</li> </ul>	
--	---

#### Visual check

- Replace damaged parts immediately.

### 9.3.2 Water connection

<p><b>Technical experts</b></p> <p>Safety equipment:</p> <ul style="list-style-type: none"> <li> - Skid proof Safety shoes</li> <li> - Safety helmet</li> <li> - Safety gloves</li> </ul>	
--	---

#### Check water connection for leakage

- Check the water connection for leakage, if necessary replace defective parts.
- Check the function of the mixed battery if necessary replace it.
- Check water hose for leakage.



### 9.3.3 Lubricate bearing points

#### Technical experts

Safety equipment:

-  - Skid proof Safety shoes
-  - Safety helmet
-  - Safety gloves



#### Check bearings

1. Acoustic check of bearings.

- In case of unusual running noises, check bearing and replace immediately if defective

## 10 Malfunction

### **Warning of dangerous electrical voltage!**

There exists a danger to life if live parts are touched. Insulation damage or individual parts can be dangerous to life.

 **DANGER**



- Touching of damaged insulation or live parts
- Basically the electric control must be separated from the network prior to each intervention in the electrical or mechanical part of the plant.
- Some circuits are also live when the main switches are switched off.
- If it is necessary due to technical reasons to implement work on the live parts of electronics, then insulating mats and insulating tool must be used. Such work may only be executed by at least two skilled electricians. In case of emergency, the plant must be switched off such that it is zero potential.(with the main switch)

### **Warning of missing safety devices!**

 **DANGER**

Safety devices dismantled for troubleshooting must be re-installed at their specified position after the fault has been fixed as otherwise serious or even fatal injuries can result from this negligence.

### **Risk of injury from improper fault rectification!**

Improper fault rectification can cause severe injuries to persons and damage to material.

 **WARNING**

- Before beginning work, ensure that there is sufficient assembly space.
- Keep the assembly site clean and tidy! Loosely stacked or lying around, components and tools pose accident risks.

⇒ Only personnel who received very detailed instructions about the handling of the machine are allowed to rectify faults.

### **Warning against the danger of slipping**

Slipping in the machine area can lead to injuries

 **CAUTION**



- There exists a danger of slipping due to injuries and/or cleaning water on the floor.
- Always wear skid-proof safety shoes while working in the machine area.

### Warning against the danger of getting squashed

There exists a danger of getting squashed that can lead to injuries.



- There is a danger of getting squashed while working on the machine.
- While working on the machine, the safety distances against getting squashed and getting squeezed must be complied with.

---

### Warning against collision danger!

Light injuries in the head area



- There exists a danger of collision in case of carelessness at the protruding parts.
- Always wear a safety helmet.

It is not allowed to make changes to the switching elements or control module and controlling system. The functional efficiency could be limited.

The resulting damage and casualty claims are not covered by the company Mitchell Engineering.

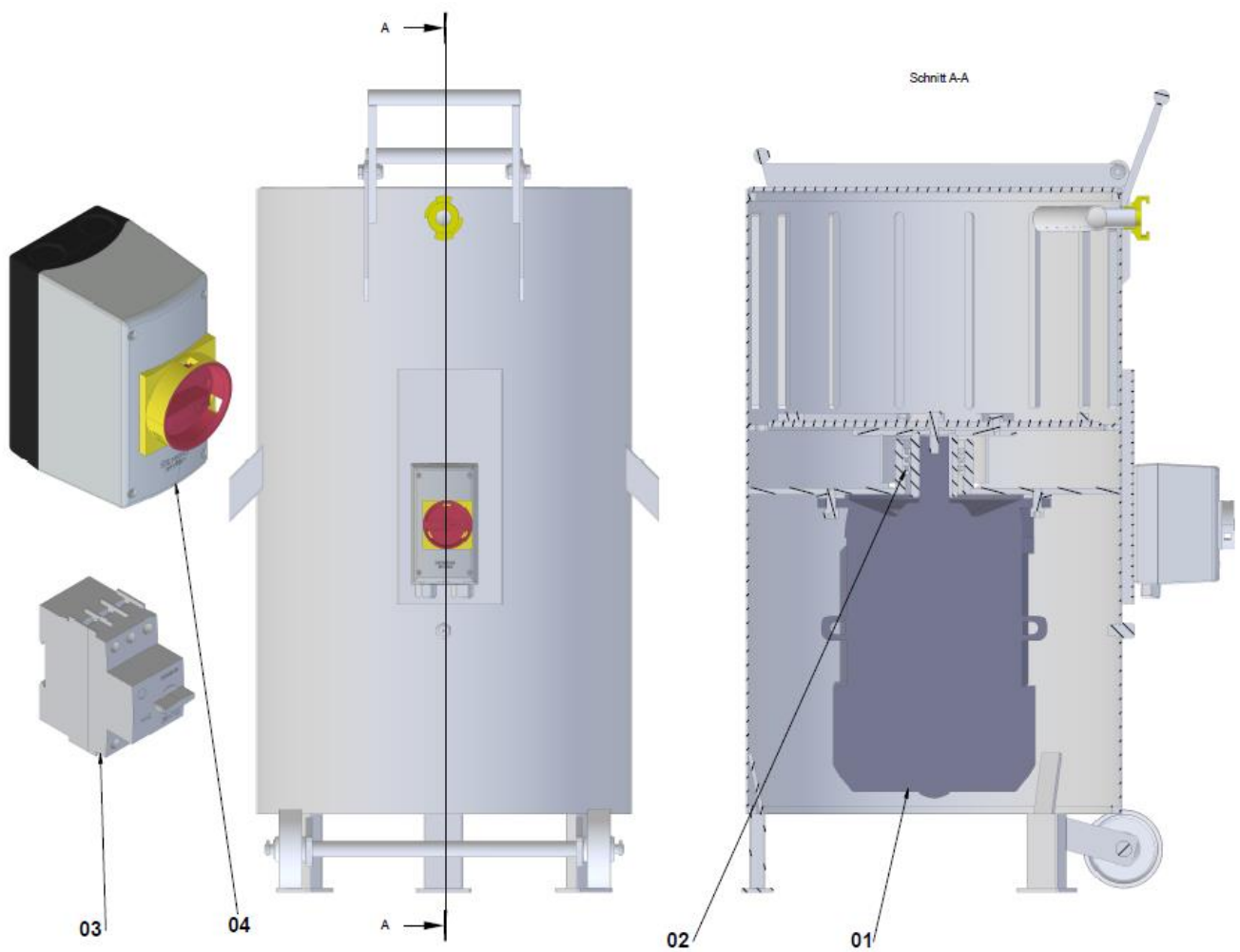
---

### 10.1 Behavior in case of a fault

The following basic rules apply:

1. In the event that faults present an immediate danger to persons or material, press the EMERGENCY STOP button.
2. Determine the cause of the malfunction.
3. Inform the person(s) responsible on site.

## 11 Spare Parts



Item-no.	Designation	Art.-no.
01	Motor	4020
02	Shaft seal 60x80x10	4021
03	Circuit breaker	4022
04	Main switch	4023

## 12 Service

Customer service can be reached at the following address:

<b>Mitchell Engineering</b>	
Street:	Benzstraße 8
City:	D-73491 Neuler
Phone:	++49 (0) 7961-96 90 97-0
Fax:	++19 (0) 7961-96 90 97-20
E-mail:	info@hubert-haas.de
Internet:	www.hubert-haas.de

If you wish to make inquiries by phone, ask for the technical service department.  
The above-mentioned address / phone number / fax number is also valid for ordering spare parts.

---

### **! NOTICE**

**If spare parts or accessories are used that are not genuine for the system, any warranty and liability claims against the Mitchell Engineering become null and void.**

## 13 Warranty

We take it upon to do warranty for the following machine for free objection materials manufacturing, professionally installation and free objection function of 1 year.

### Left out of the warranty:

- Electrical equipment
- parts, which are defeated the attrition
- damages, which are reduce to an improper treatment

Date of sale: \_\_\_\_\_

Machine no ; \_\_\_\_\_